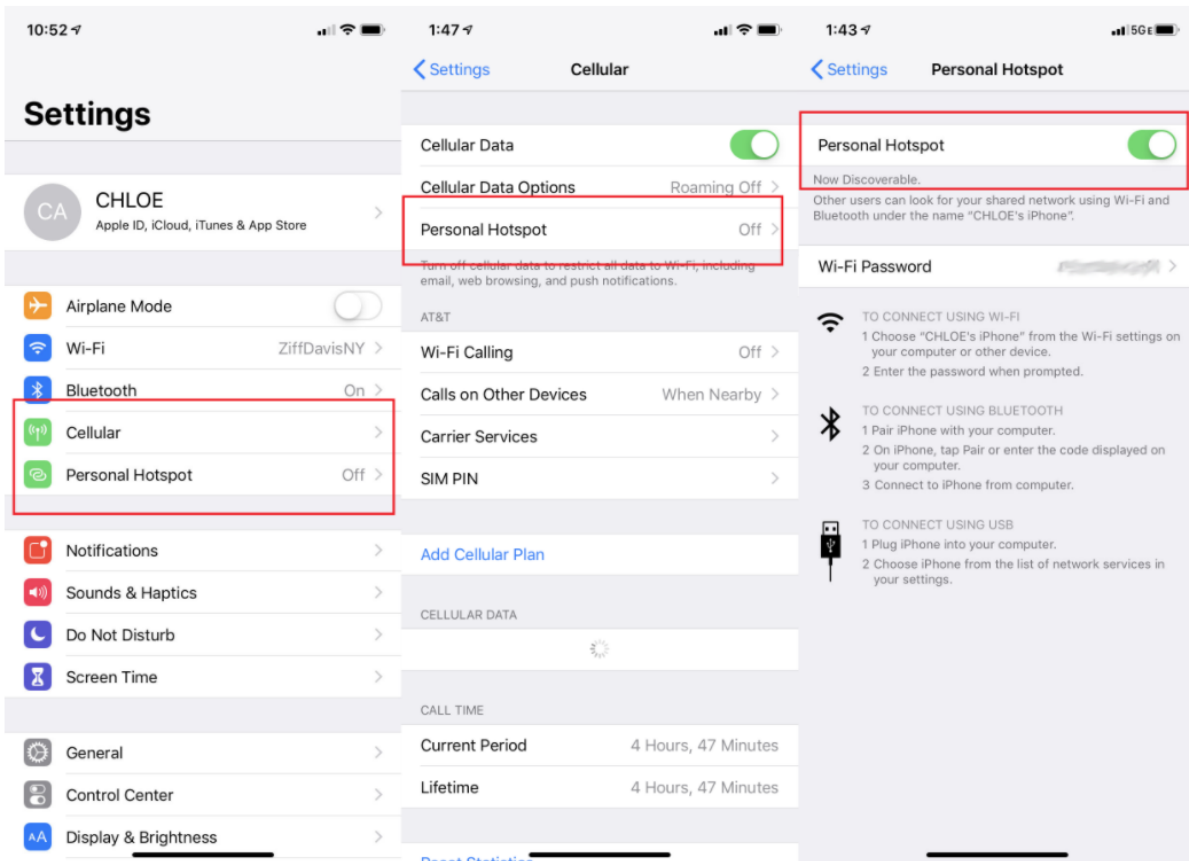




1. Turn on Wi-Fi Hotspot With iOS Devices

To set up a personal hotspot on your iPhone or iPad (Wi-Fi + Cellular), go to Settings > Personal Hotspot and toggle it on (if you don't see Personal Hotspot in Settings, tap Cellular > Personal Hotspot). Make note of the Wi-Fi password.



Open the Wi-Fi menu on the device you need to connect to the internet. Look for your iOS device (ex: PCMag's iPhone), tap it, and enter the password that appears on your iPhone's Personal Hotspot screen.

Your secondary device should now be able to surf the web (and consume mobile data). To disconnect, toggle Personal Hotspot to off on your iOS device.

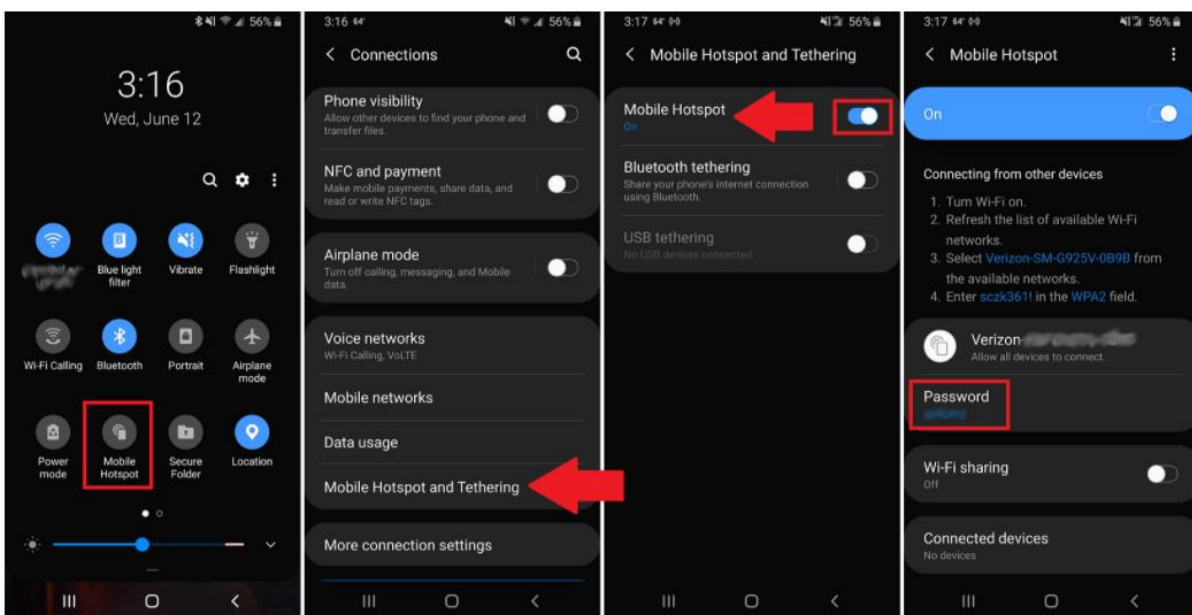


2. Turn on Wi-Fi Hotspot With Android Devices

How you access Wi-Fi hotspots on Android phones will depend on which device you have and which version of Android you're running. If you navigate to Settings and search for "tether," it should appear, but here's an idea of what it looks like on some of the top Android phone brands. To deactivate hotspot mode, navigate back to these settings and toggle them off.

2.1. Samsung

Below you can see what it looks like on a Samsung Galaxy S8 running Android 9.0 Pie. You can either pull down and tap the Mobile Hotspot option in the menu to activate. Or navigate to Connections > Mobile Hotspot and Tethering > Mobile Hotspot and toggle it on. A pop-up window will appear, where you can find the Wi-Fi password for devices that want to connect.





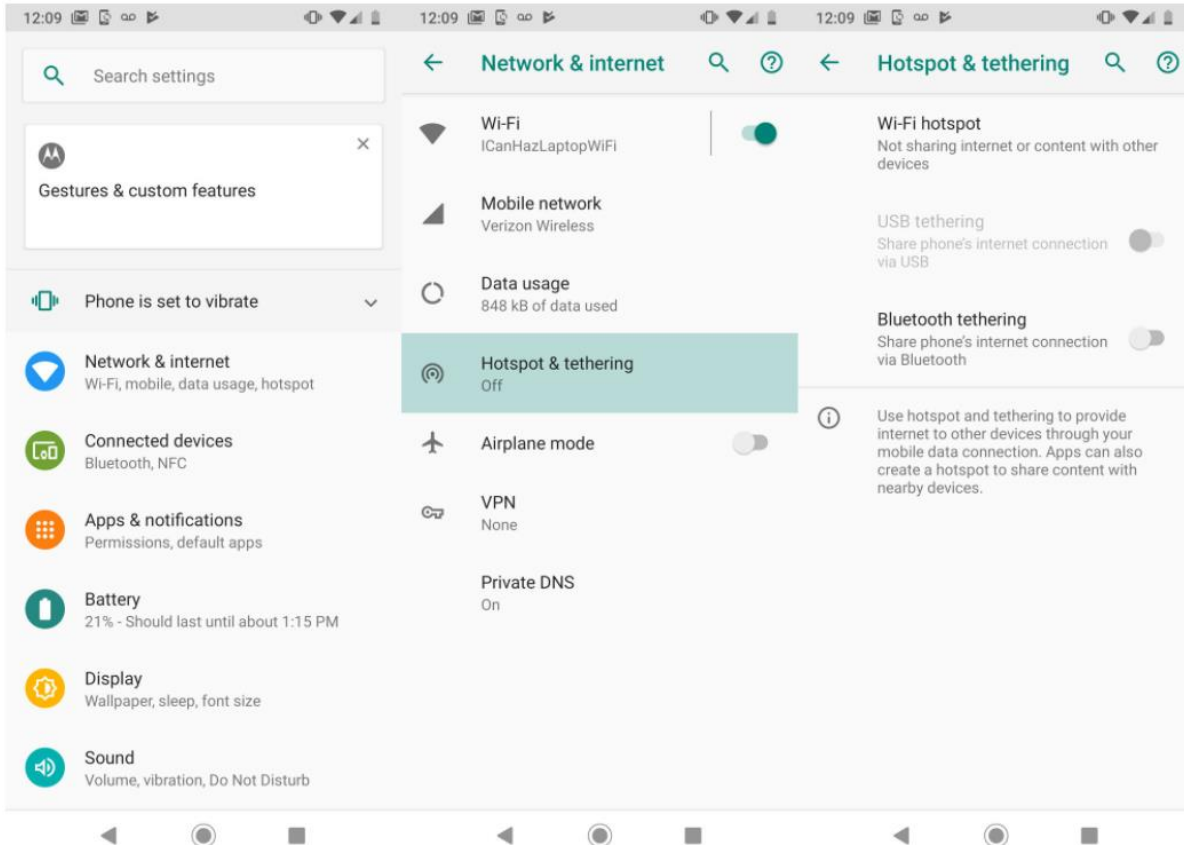
Chesswood Junior School

Using a Mobile Device as WiFi Hotspot



2.2. *Motorola Moto*

To turn on tethering on a Moto Z4 running Android Pie, navigate to Settings > Network & internet > Hotspot & tethering. Here, you can select to share a connection via Wi-Fi, USB, or Bluetooth.



For a Wi-Fi connection, tap Wi-Fi hotspot and toggle it on. The hotspot name will be displayed on this screen. Tap Advanced > Hotspot password for the password.



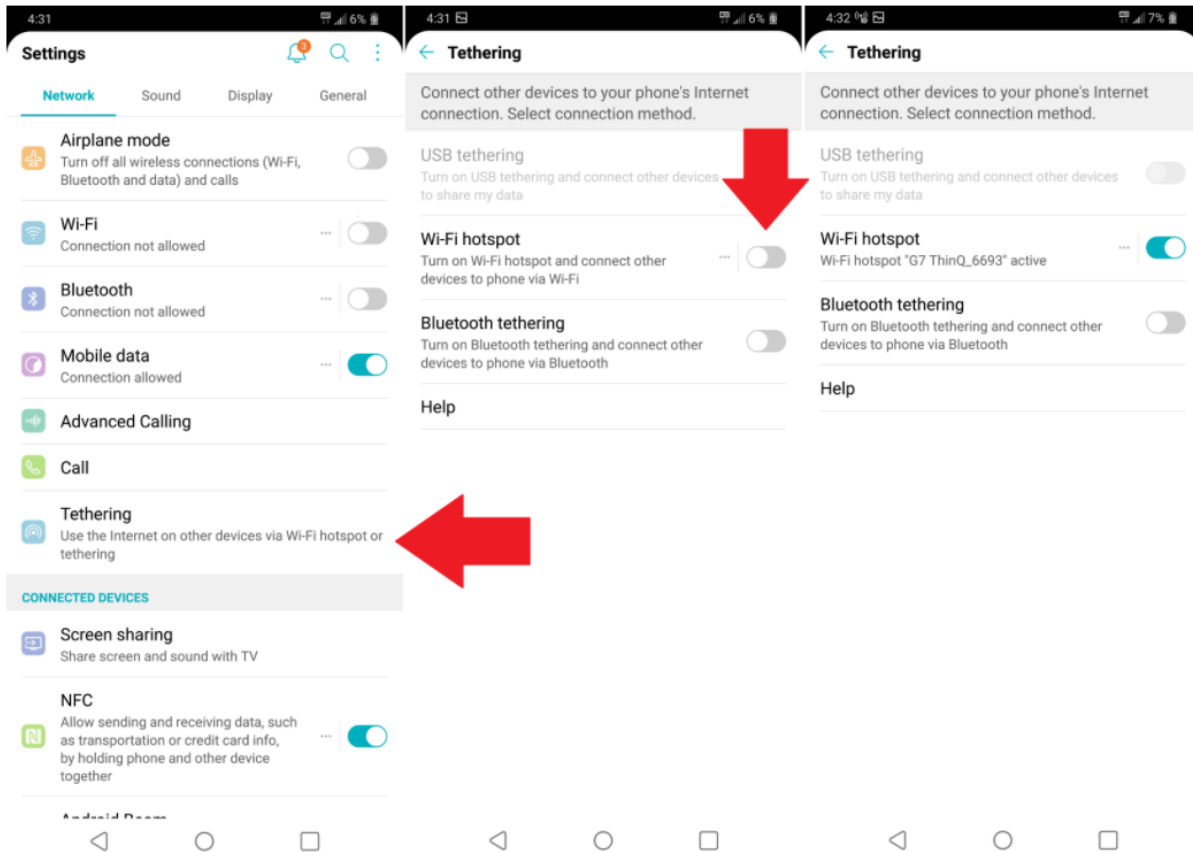
Chesswood Junior School

Using a Mobile Device as WiFi Hotspot



2.3. LG

Pull down from the top of the screen and select Settings > Tethering. Then toggle the Wi-Fi hotspot switch to on.





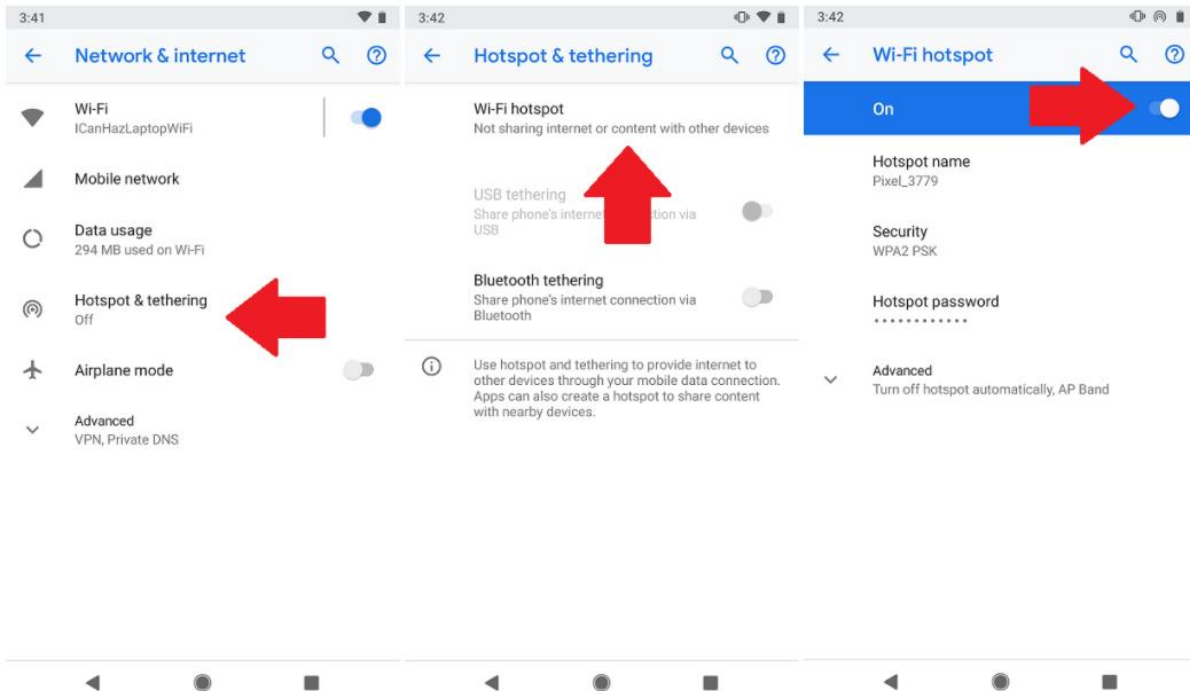
Chesswood Junior School

Using a Mobile Device as WiFi Hotspot



2.4. Google Pixel

Pull down from the top of the screen and navigate to Settings > Network & Internet > Hotspot & Tethering > Wi-Fi Hotspot, and toggle the switch to on. The hotspot name and password will then be visible.





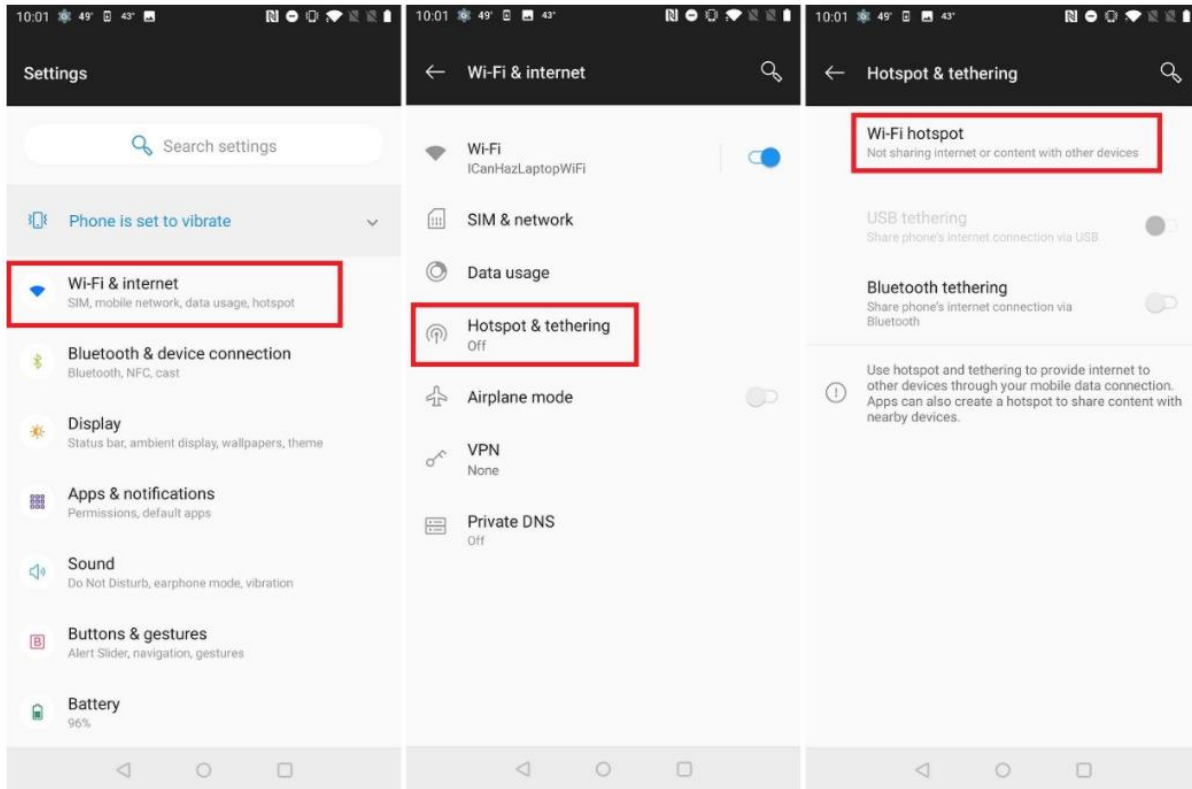
Chesswood Junior School

Using a Mobile Device as WiFi Hotspot



2.5. OnePlus

Swipe up from the bottom of the screen, then select Settings > Wi-Fi & internet > Hotspot & Tethering and make sure the switch up top is toggled on.





Chesswood Junior School Using a Mobile Device as WiFi Hotspot



2.6. Huawei

Navigate to Settings > Wireless & networks > Tethering & portable hotspot > Portable Wi-Fi hotspot. Choose Configure Wi-Fi hotspot to set a name, security setting, and password for your hotspot, then tap Save.

