

MEASURE LENGTH (M)



GET READY

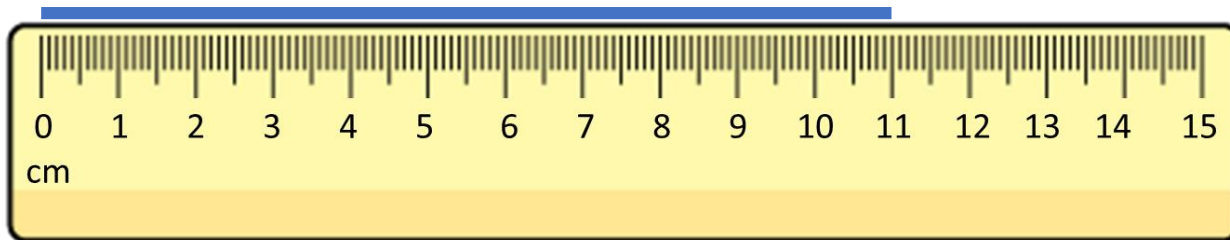


1) Complete the statements

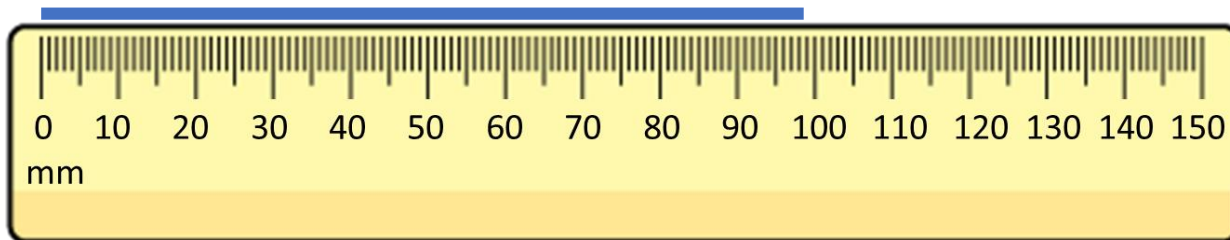
There are _____ centimetres in 1 metre

There are _____ centimetres in half a metre

2) How long is the line?



3) How long is the line?

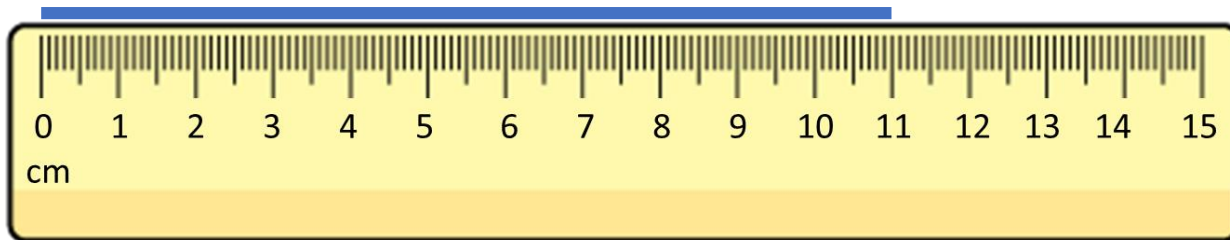


1) Complete the statements

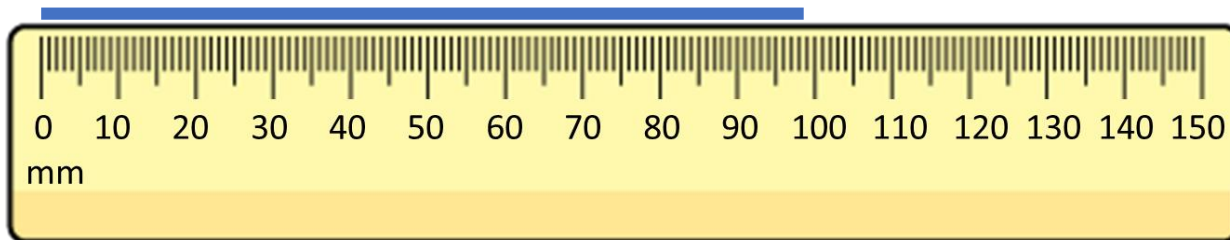
There are 100 centimetres in 1 metre

There are 50 centimetres in half a metre

2) How long is the line? **11 cm**



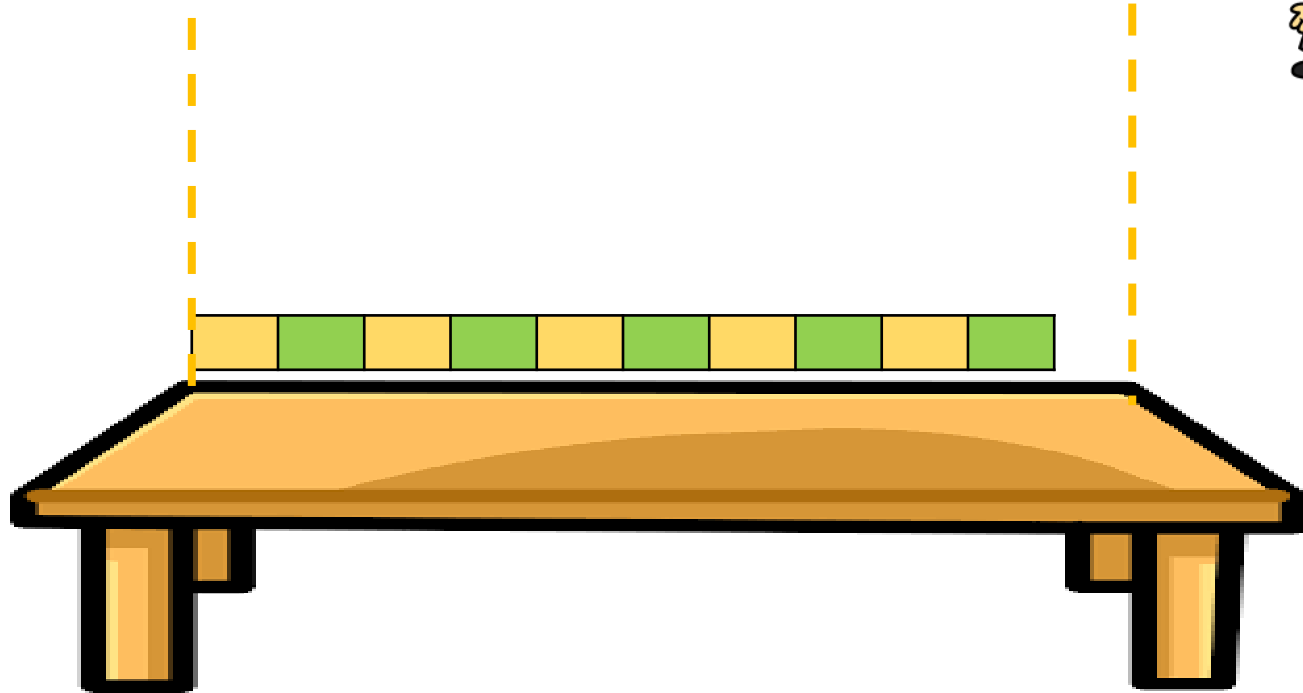
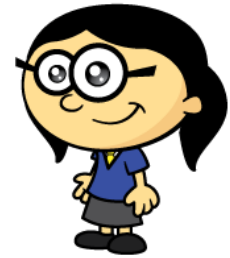
3) How long is the line? **98 mm**



LET'S LEARN



Annie is comparing lengths to 1 metre



The table is longer than 1 metre

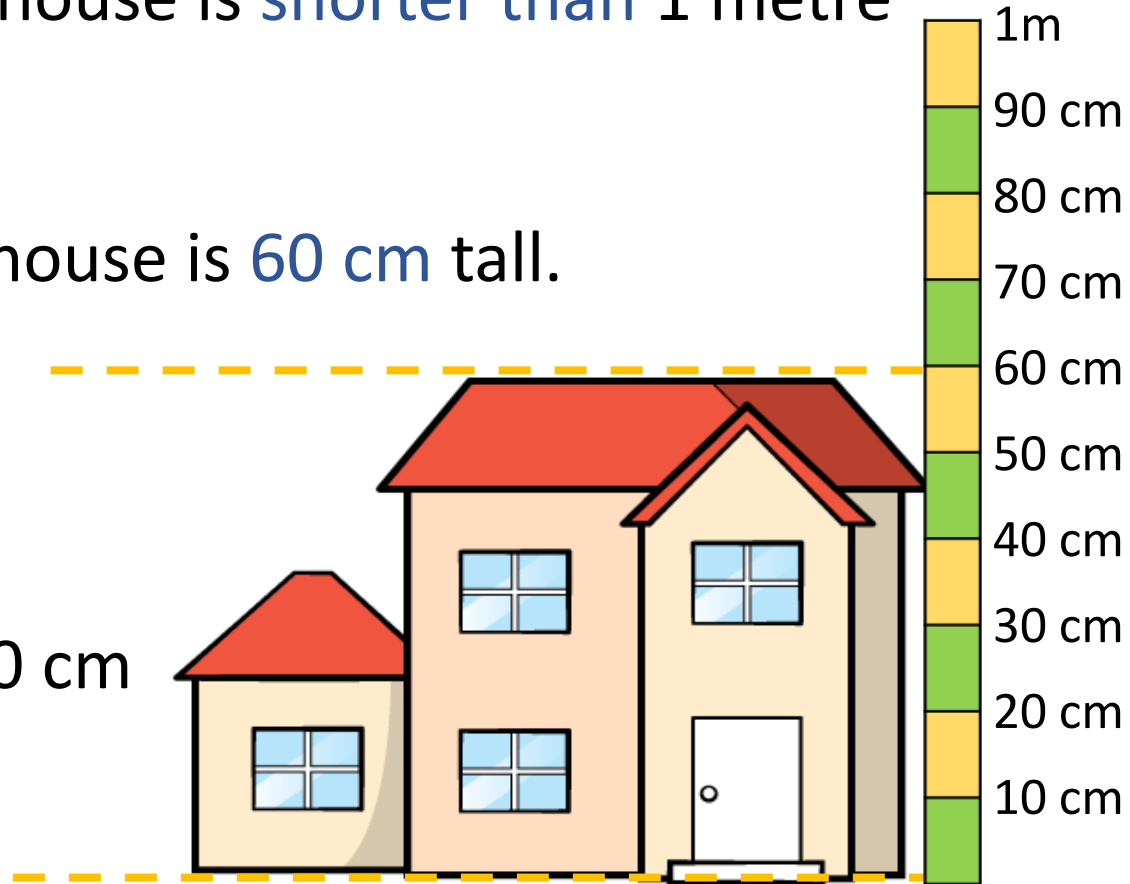


Annie is comparing lengths to 1 metre

The dolls house is shorter than 1 metre



The dolls house is 60 cm tall.

1 m = 100 cm





Annie makes a table to show her results.

Shorter than 1 m	Longer than 1 m
 A cartoon illustration of a house with a red roof, a white door, and several windows.	 A cartoon illustration of a long, low wooden table with four legs.

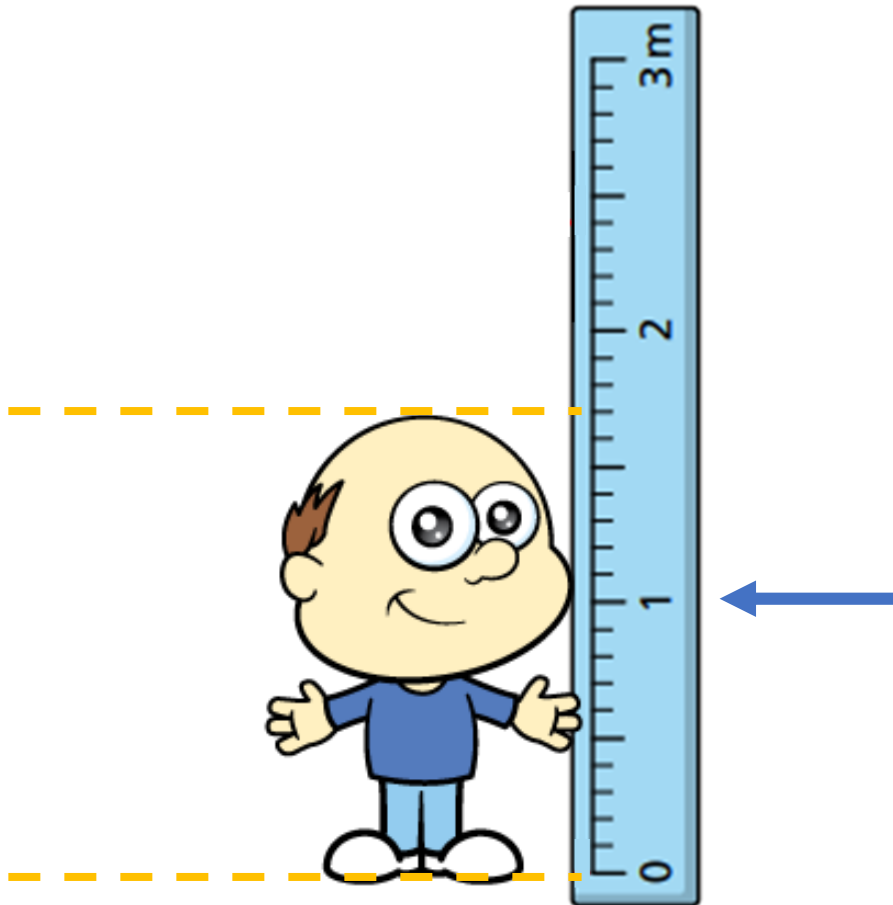
YOUR TURN

Have a go at question 1 on the worksheet.

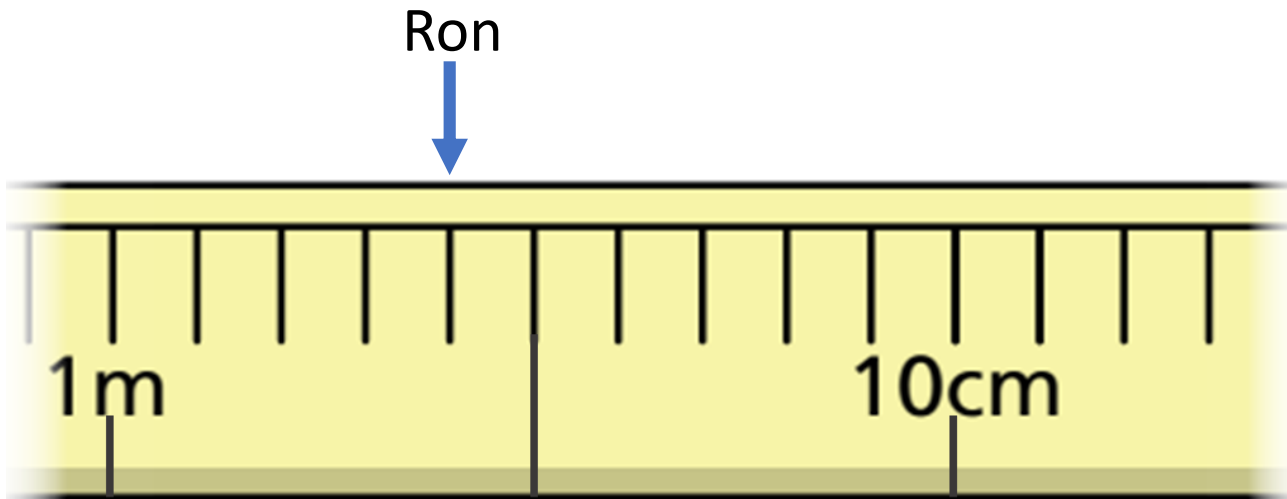
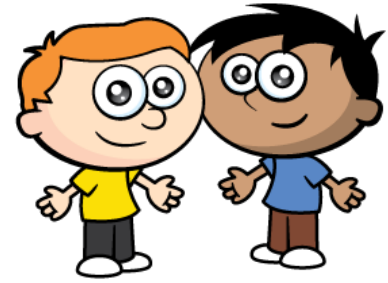


The children are measuring Mr Rose.

Mr Rose is 1 m and 70 cm tall.

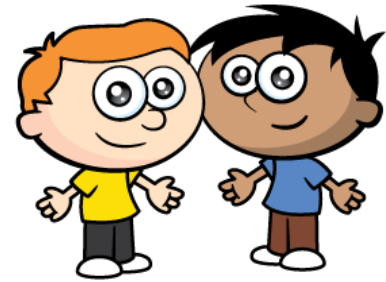


Ron and Amir have been measuring their arm span.
Here is part of a tape measure.

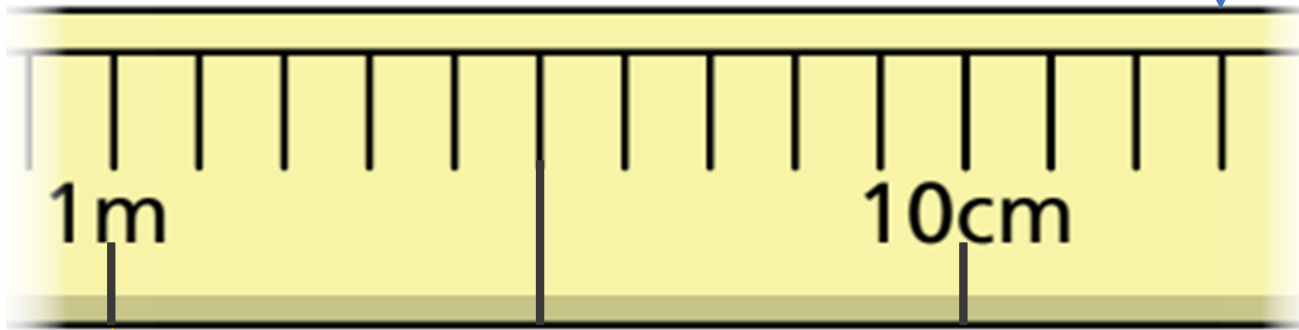


Ron's arm span is 1 m and 4 cm

Amir's arm span is longer than Ron's.



Amir



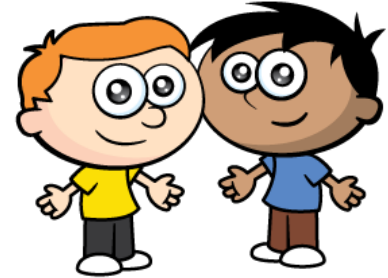
How long is Amir's arm span?

Amir's arm span is 1 m and 13 cm

Have a think



Ron and Amir decide to measure the length and width of the classroom.



Have a think

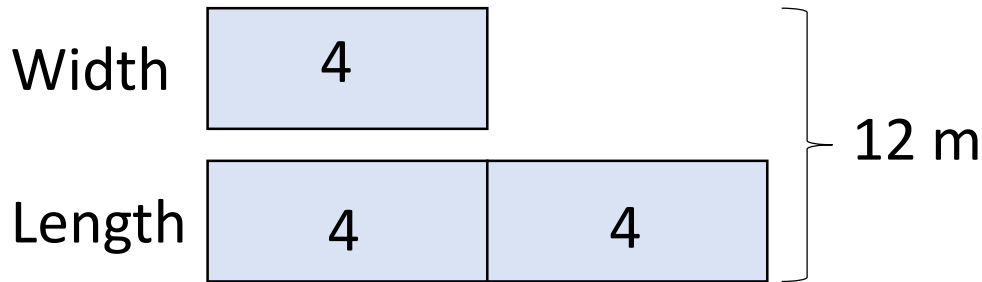
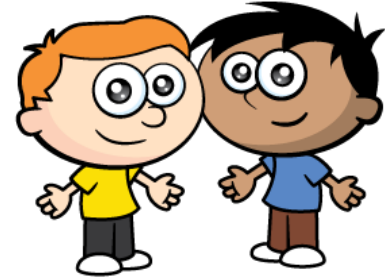
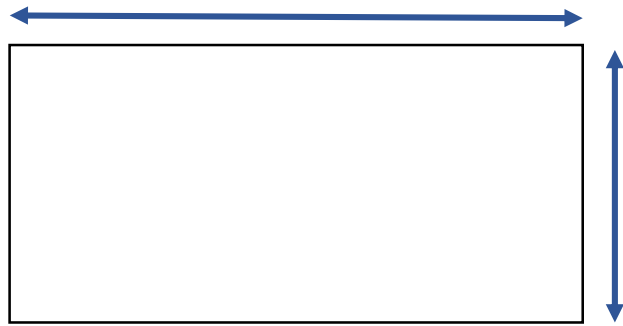


Altogether they measure 12 metres.

The classroom is twice as long as it is wide.

How long and how wide is the classroom?

Altogether they measure 12 metres.
The classroom is twice as long as it is wide.
How long and how wide is the classroom?



$$12 \div 3 = 4$$

The classroom is 8 m long and 4 m wide.

YOUR TURN

Have a go at the rest of
the questions on the
worksheet.

