

Chesswood Y3 Geography — We are Air Quality Officers



Key Knowledge

What I Should Already Know

- Countries of the UK (Key Stage 1)
- 4 points of the compass (ks2)
- Types of Settlements (Ks2)

What is an Air Quality Officer?

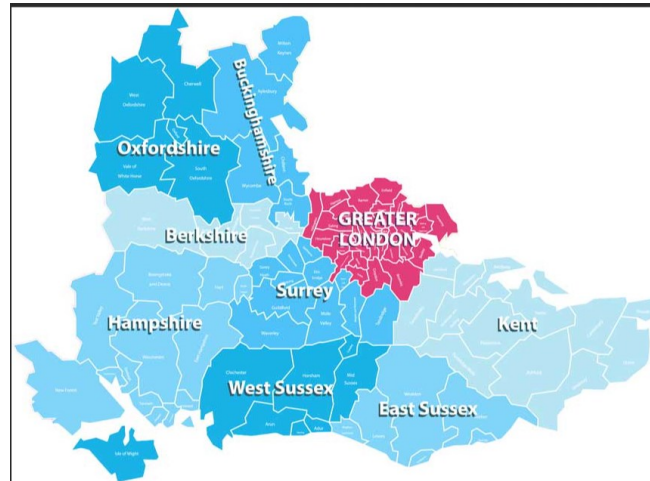
Someone who carries out air quality surveys, looks out for possible risks and seeks strategies for overcoming these, striving for high quality of air in our cities and towns.

The 9 regions of England . Worthing is located in the **South East**.

Regions are divided further into counties.

The counties of the South East of England are **West Sussex, East Sussex, Kent, Surrey, Hampshire, Surrey, Berkshire, Oxfordshire, Buckinghamshire and Greater London** (9)

Worthing is in West Sussex. Counties around West Sussex—east is East Sussex, west is Hampshire, north is Surrey and to the south is the **English Channel**.

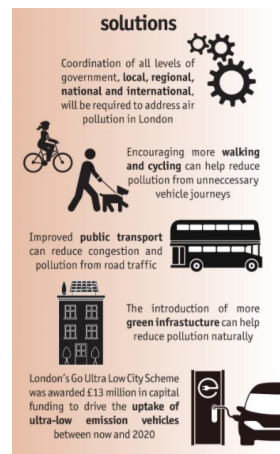


Sustainability

Towns and cities will have problems with **pollution** because there are lots of people living in a small area.

Traffic is the main producer of air pollution in cities.

Solutions to air pollution in cities include: green public transport, charging stations for electric cars, bicycle lanes, congestion charges and low emission zones.

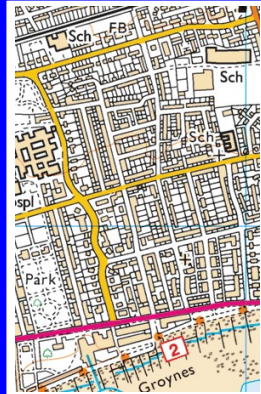


Key Vocabulary

Word	Definition
Site	The piece of land a settlement is build on.
National	Relating to a country
Regional	Relating to a region (part) of a country
Local	Relating to a particular area or your own neighbourhood
Regions	Large areas of the country
County	Smaller areas of the country with it's own government offices
Capital City	Is where the local government of a country is. The leaders work in the capital city.
Pollution	Pollution is anything that makes the earth dirty and unhealthy. Land, air, and water are all affected by pollution
Air Quality	a measure of how clean or dirty the air in a particular area is.
Air pollution	Is when unwanted chemicals, gases and particles enter the air causing harm to animals and damaging the natural cycles of the Earth
Traffic	Vehicles (cars, buses, motor bikes etc moving along a road)
environment	The natural world, with the plants and animals living in it.
sustainability	Sustainability is the practice of using natural resources responsibly, so they can support both present and future generations
urban	Relating to a city or town (housing, factories, offices, roads and footpaths)
Green urban	An area in a town or city which covered with grass or other trees (park or woodland.)

Y3 Geography — We are Air Quality Officers

Key Skills



Fieldwork Skills

Pupils to consider the problem of air pollution on Chesswood Road by counting

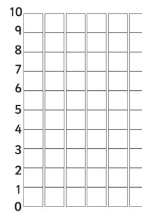
the amount of traffic over a 10 minute period using a tally chart and creating a block graph or bar chart to present the data.

On the OS map showing Brighton Road (Splashpoint) and Chesswood Road, we can see that Brighton Road is a main road and Chesswood Road is a minor road. This means that Brighton Road is busier with more traffic than Chesswood Road.

Traffic Survey and Block Diagrams Activity

Name: Date:

	cars	buses or coaches	vans	lorries	motorbikes	bicycles
Tally						
Total						



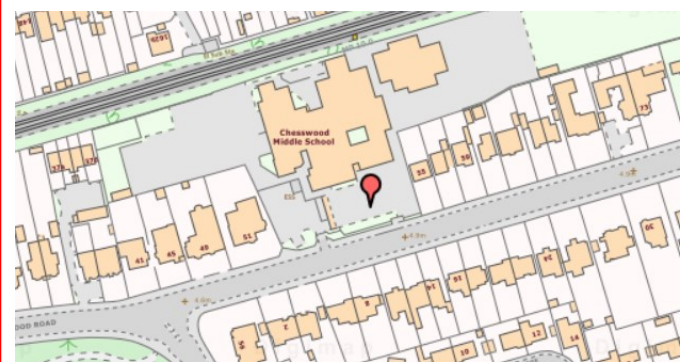
Questions

1. Which one is the least?
2. Which one is the greatest?
3. Are any of them equal?
4. What is the difference between the greatest and least?

Fieldwork

Pollution Problems

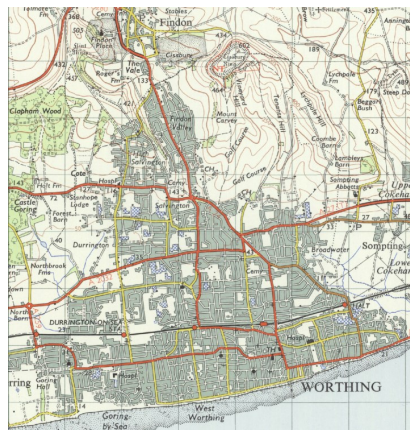
- Location: From front playground/footpath



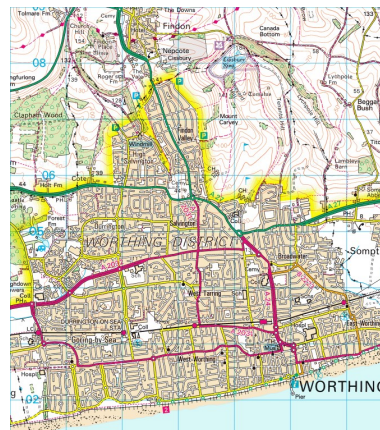
Map Skills



Worthing 1890s



Worthing 1950s



Worthing 2000s

Worthing has increased in size since the 1890s. Then most of the town was **south** of the railway line and was only starting to reach **West** Worthing. By the 1950s, the town had grown to the **north** and by the 2000s, Durrington is also providing housing for a larger population.

Car Pollution Investigation

Pupils to collect data (how many pedestrians, cyclists, vans, cars, lorries, buses and motorbikes) for 10mins .

Key Ordnance Survey Symbols

- Single carriageway main road
- Secondary road
- Minor road over 4m wide
- Minor road under 4m wide