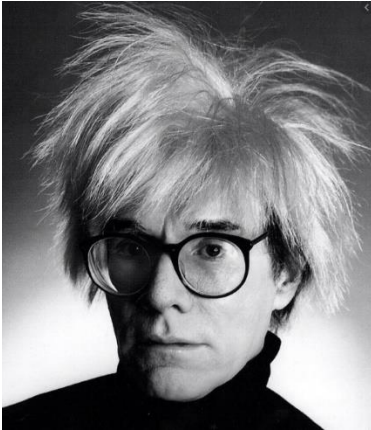


## WALT: Identify the features of Andy Warhol's Pop Art



### **Focus Artist— Andy Warhol— 1928—1987**

Andy Warhol was born in Pennsylvania in 1928 and is most famous for exploring popular culture in his work (known as Pop Art) and using bright colours along with silk screening techniques to mass-produce artwork. Warhol produced most of his art in his studio called The Factory which he shared with a group of actors, models and artists in New York City. Warhol saw art as a product,

as the clothes you wear and the food you eat. He had a very particular personal style which included a shock of white hair, leather jackets and glasses or sunglasses. Today he is known as one of the most influential artists who ever lived.

### **What is Pop Art**

Pop Art is art based on modern popular culture and the mass Media.

- It utilises images and icons from popular media.
- It is vibrant and utilises bright colours.
- It uses humour: irony and satire
- It is produced using mixed media

Take a look at the two clips below to learn more about Pop Art and Andy Warhol

Andy Warhol - <https://www.youtube.com/watch?v=XfrfC-UpOao>

Pop Art - Play from the start to 3 minutes - <https://www.youtube.com/watch?v=o8Va9YrlNg>

On the next page are some examples of Andy Warhol's most famous work, the film star Marilyn Monroe (1967) and Campbells Soup cans (1962)

Your task is to annotate the features of Pop Art you are able to identify in Andy's Artwork using the knowledge you have gained from the information above and the video clips.

Send your finished annotated work to Miss Read at

[cread@chesswood.w-sussex.sch.uk](mailto:cread@chesswood.w-sussex.sch.uk)

