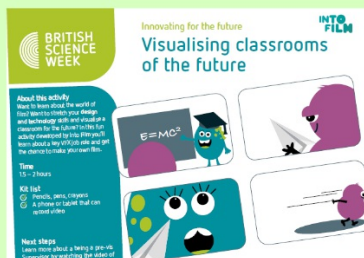




British Science week celebrates all things science, technology, engineering and maths.

This year's theme is 'innovating for the future'.



Unfortunately, this year we are unable to run the 'Great Chesswood Science Fair' but we are going to be putting on a few activities and competitions for you to carry out over the next couple of weeks.



What is innovation?

Innovation is when a person comes up with a new idea, method or product.

Watch this video on a few women helping to innovate and smash stereotypes, in science and the motor industry.





Activity 1

Tim Peake's space rocket experiment



You are going to be building a rocket like the one Tim Peake has done and experimenting with the amount of water needed to create lift-off! We want the least amount of water that can make the rocket move.

Watch the video below to see how Tim has created his.

<https://www.bbc.co.uk/iplayer/episode/m000jy9r/celebrity-supply-teacher-series-1-18-tim-peake-science> T: Start at 4:39 and end at 8 mins



As a class you are going to be split into two groups to create a rocket each

Each group is going to then be split into 4 smaller groups to help complete different jobs:

- *Design team for the rocket*
- *Design team for the launch pad*
- *Making the rocket*
- *Testing team making the decisions about the ideal amount of water/ thrust needed*



What you will need

The equipment you will be supplied with will be:

- A large plastic bottle
- A standing bike pump
- A ball adaptor for the pump
- A cork the same size as the ball adaptor
- Water
- Tape
- Lego for the base
- Paper/card to embellish your rocket

You will need to think about this when you are completing the tasks in your teams.



You will have 30 minutes to design then an extra 15 minutes to build your rocket and launch pad.

Once everything has been completed you will go outside with your teachers to see if your theory works.

T: make sure you have taken lots of videos/pictures through this process



Activity 1

Tim Peake's space rocket experiment



How did it go?

Did it work as well as Tim's?

How successful do you think it was?

What do you think you could have done better?

<https://www.bbc.co.uk/iplayer/episode/m000jy9r/celebrity-supply-teacher-series-1-18-tim-peake-science> T: Start at 4:39 and end at 8 mins



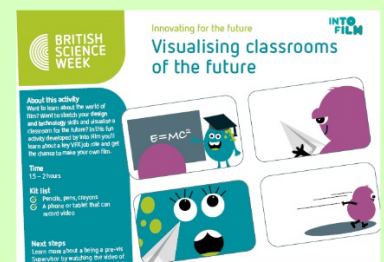
To test your innovation skills we're going to run a design and innovation competition between now and the last week of term.

The deadline for entries will 12:00PM on March 29th (Monday of the last week of term) so that we can celebrate all of your wonderful designs and choose winners before the end of term.

VERY IMPORTANT!!! We are looking for interesting design and innovation and so the winners might not be the best looking but will be the entries that have the best ideas!



We're going to give you two choices for what you can design!



More details coming soon!

