

6 Sort the fractions into the circles.

~~$\frac{5}{6}$~~

~~$\frac{1}{8}$~~

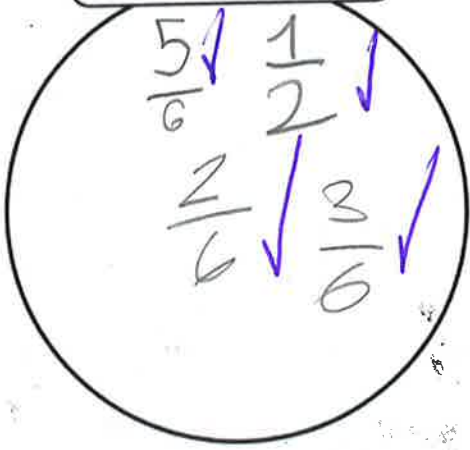
~~$\frac{1}{2}$~~

~~$\frac{2}{6}$~~

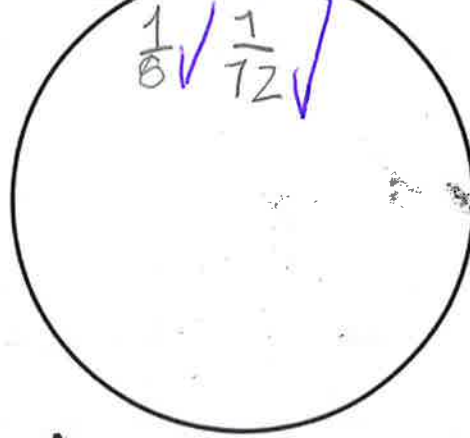
~~$\frac{1}{12}$~~

~~$\frac{3}{6}$~~

greater than  $\frac{1}{6}$



less than  $\frac{1}{6}$



How can the denominators help you to sort the fractions?

The bigger the denominator, the smaller the part.

7 Complete the sentences using the word bank.

numerator

denominator

greater

smaller

a) When fractions have the same denominator, the greater the numerator, the greater the fraction.

b) When fractions have the same numerator, the greater the denominator, the smaller the fraction.