

Emergency Evacuation Plans & Routes





Chesswood Junior School Emergency Evacuation Plan



1. Primary and Secondary Evacuations	3
1.1. Primary Evacuation	4
1.2. Secondary Evacuation	4
1.3. Primary Evacuation	5
2. Main Building Evacuation Routes	6
3. Main Building Fire Zones	7
4. New Building Ground Floor Evacuation Routes	8
5. New Building Ground Floor Fire Warden Zones	9
6. New Building First Floor Evacuation Routes	10
7. New Building First Floor Fire Warden Zones	11
Year 5 Ground Floor	12
Year 6 First Floor Classes	13
New Building Playground Entry Routes	14
Year 3 and 4 Main Building	15
7.1. Day Time Organisation	16
8. Main Building Fire Zones	17
9. School Disco Fire Warden – Sweep Zones	18
10. Musical Theatre Drop Off	19
11. Musical Theatre Drop Off	20
12. School Disco Pick Up Arrangements	21
13. School Disco Evacuation	23



Chesswood Junior School Emergency Evacuation Plan



1. RACI – Responsible, Accountable, Consulted, Informed

Emergency Contingency Plan			
ID:	L06	Area:	School
Document Type:	Policy	Level:	Health and Safety
Basis:	Recommended		
Background:			
Authorisation			
Approval Authority:	Responsible Governors		Approval date:
Approval Guide:	<div style="border: 1px solid black; padding: 2px;"> 2 Governor assigned to the area would read, understand and approve amend/approve document, as appropriate. The full governing body would ratify on the recommendation of approval by the governor/s with area responsibility. </div>		
Life Span			
Live date:	07/11/2022	Days:	365
Term of Review:	3 Summer	End by:	07/11/2023
RACI - Responsibility, Accountability, Consultation, Informed			
Accountable Governor:	Darren Carroll		
Responsible Governors:	Darren Carroll		
Senior leader Accountability:	Andrew JOLLEY		
Leadership Accountability:	Benjamin MILLER		
Operational Leadership:	Benjamin MILLER, Jeremy HIMSWORTH, Nicola SOLTERMANN, Treena BEECH		
Consulted:			
Consultation Details:			
Informed:	Administration, Finance and HR, Senior Leadership, Wider Leadership Group		
Informed Details:	Meeting Face to Face, Website		
Storage and Communication			
System Location:	Y:\School Level\Policies\Emergency Contingency Plan - Recommended\Emergency Contingency Plan		
Hard Copy Storage:	Head Teacher's Office, Senior Leader Office		
Web Publication			
Web Site Location:	Website Requirement:		No
School Web Path:			

Equality Impact Assessment			
Age Impact:	Limited	Age Impact Type:	Neutral
Disability Impact:	Moderate	Disab Impact Type:	Positive
Disadvantaged Impact:	Limited	Disadv Impact Type:	Neutral
Faith Impact:	Limited	Faith Impact Type:	Neutral
Gender Impact:	Limited	Gender Impact Type:	Neutral
Marital Status Impact:	Limited	MSImpact Type:	Neutral
Maternity Impact:	Limited	Maternity Impact Type:	Neutral
Race Impact:	Limited	Race Impact Type:	Neutral
SEN Impact:	Low	SEN Impact Type:	Positive
Sexual Orientation Impact:	Limited	SO Impact Type:	Neutral



Chesswood Junior School Emergency Evacuation Plan



2. Primary and Secondary Evacuations

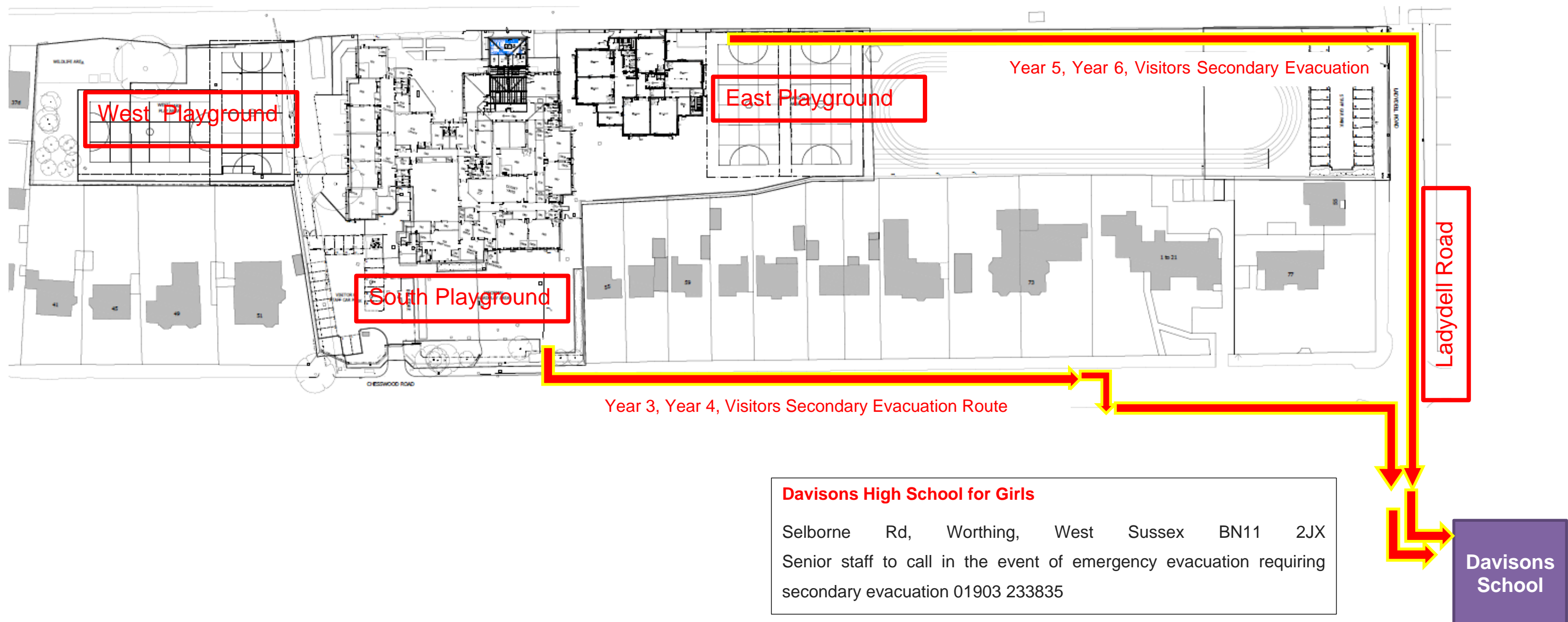
2.1. Primary Evacuation

In the event of any evacuation that enables all site occupants to remain on site, occupants will evacuate following the agreed evacuation routes to the agreed fire assembly zones on the West, South and East playgrounds. Unless told otherwise, or the following specific circumstances where communicated – verified gas leak; bomb threat – of any type, all members of staff would assume the primary evacuation procedures would remain in place.

2.2. Secondary Evacuation

In the event of a verified gas leak; bomb threat or other major incident (i.e. rail accident) that renders the whole site unsafe or emotionally disturbing, staff and children would evacuate to Davisons High School. If dry, staff and children would proceed to the Davison school field. If wet or dark staff and children would evacuate to Davisons High School Sports Hall.

A reciprocal agreement is in place with Davisons. In the event they need a secondary evacuation site Chesswood would supply both school halls for their Y7 & 8 pupils.

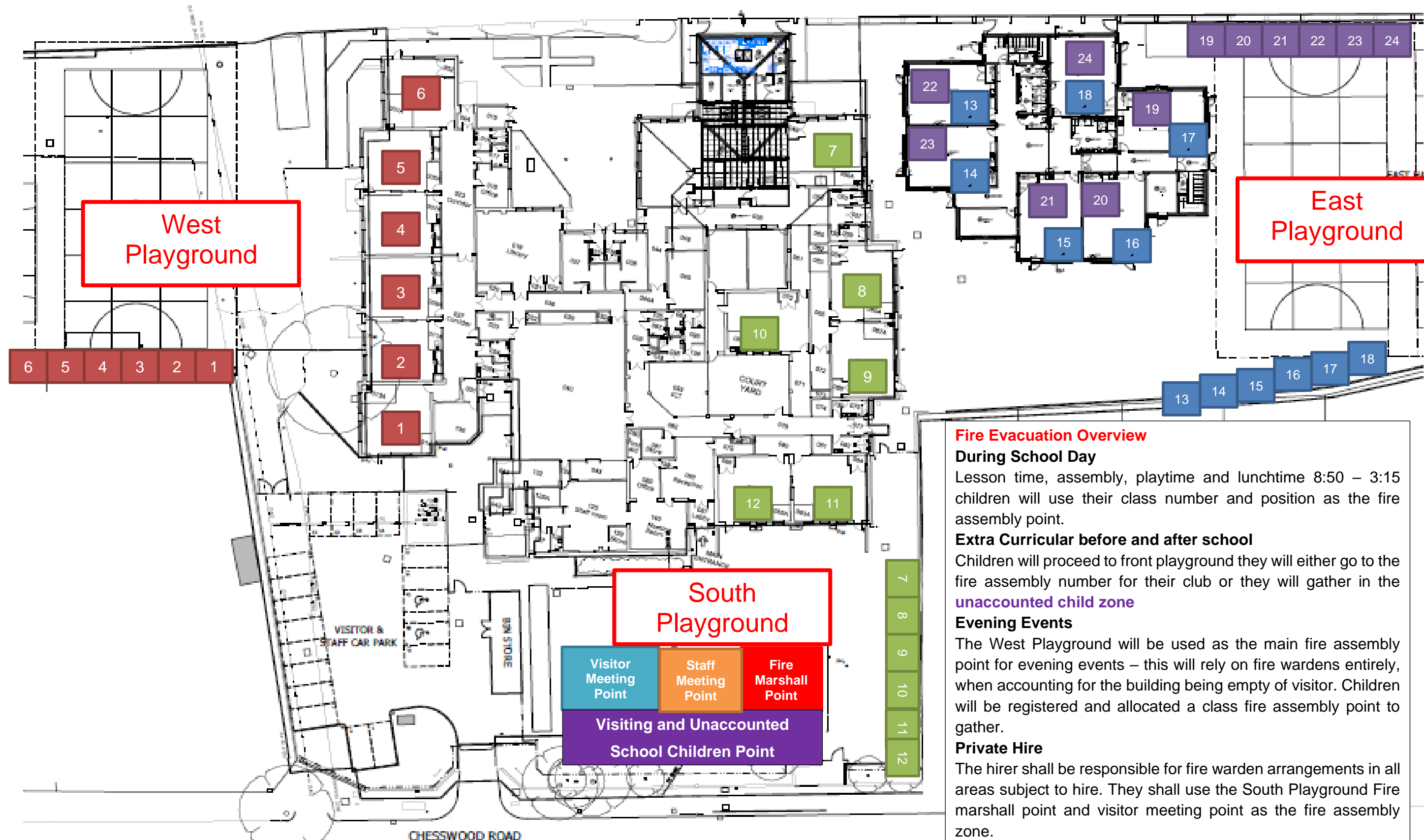




Chesswood Junior School Emergency Evacuation Plan



2.3. Primary Evacuation



Fire Evacuation Overview

During School Day

Lesson time, assembly, playtime and lunchtime 8:50 – 3:15 children will use their class number and position as the fire assembly point.

Extra Curricular before and after school

Children will proceed to front playground they will either go to the fire assembly number for their club or they will gather in the **unaccounted child zone**

Evening Events

The West Playground will be used as the main fire assembly point for evening events – this will rely on fire wardens entirely, when accounting for the building being empty of visitor. Children will be registered and allocated a class fire assembly point to gather.

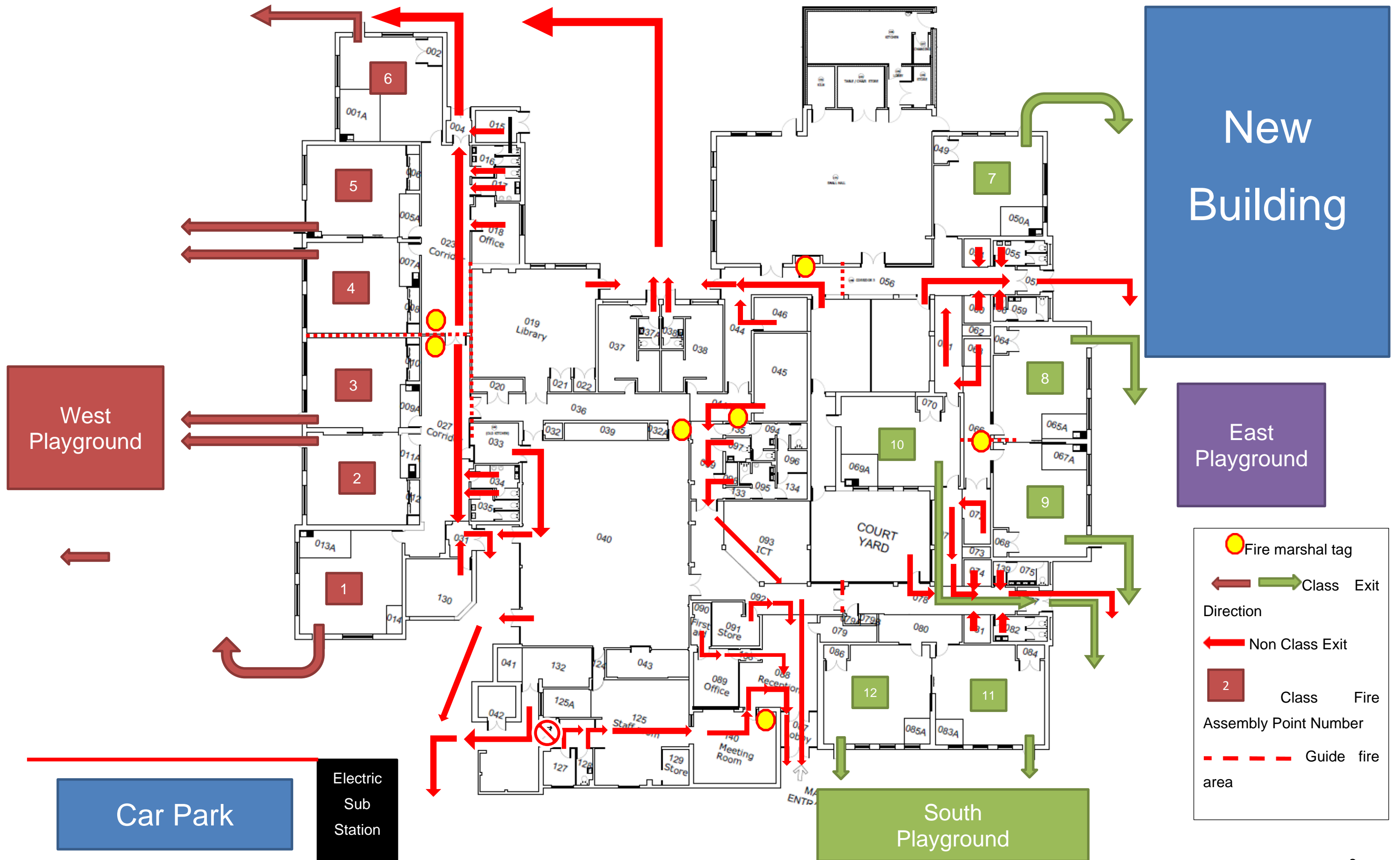
Private Hire

The hirer shall be responsible for fire warden arrangements in all areas subject to hire. They shall use the South Playground Fire marshall point and visitor meeting point as the fire assembly zone.



Chesswood Junior School Emergency Evacuation Plan

Main Building Evacuation Routes

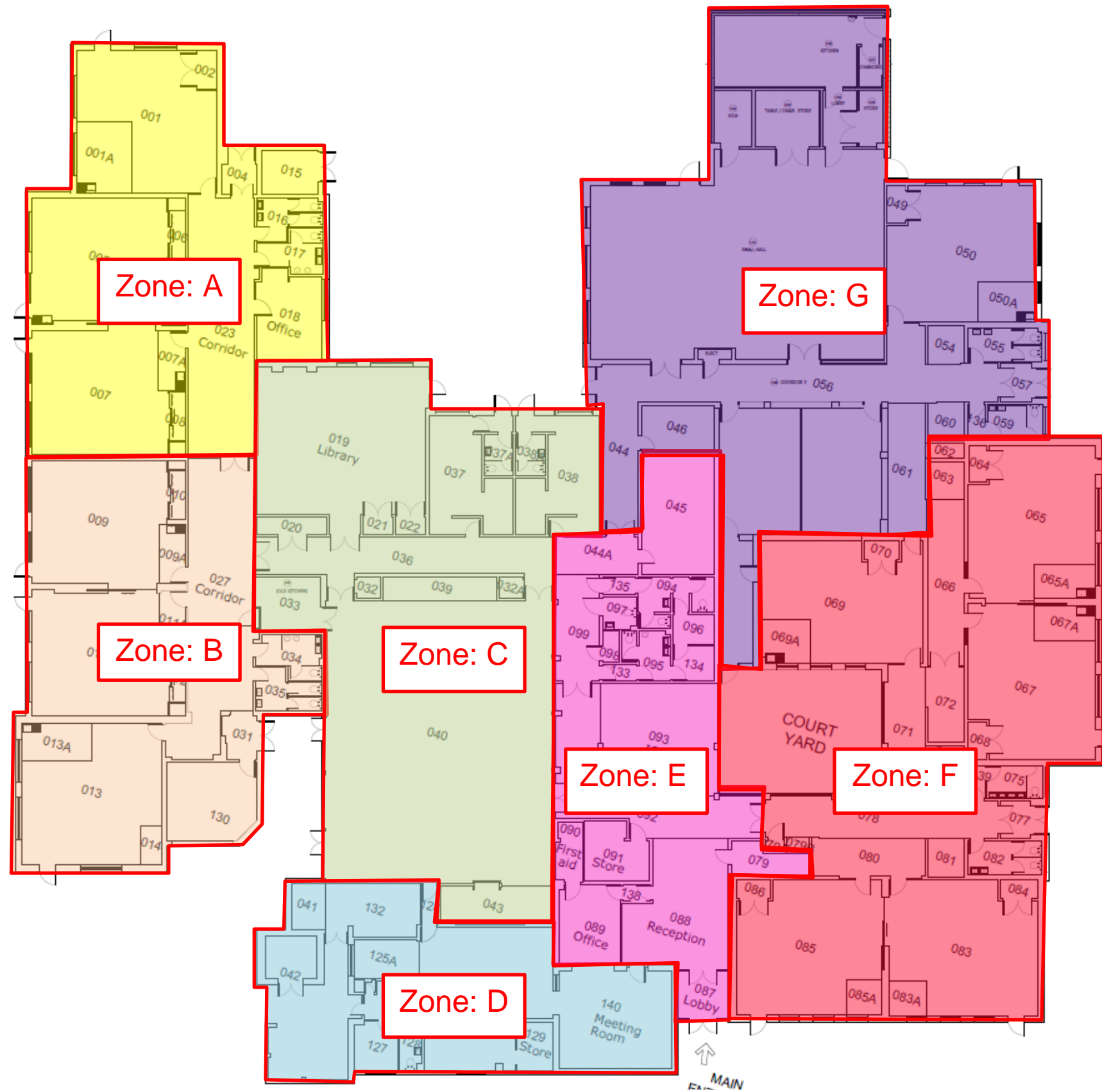




Chesswood Junior School Emergency Evacuation Plan



3. Main Building Fire Zones

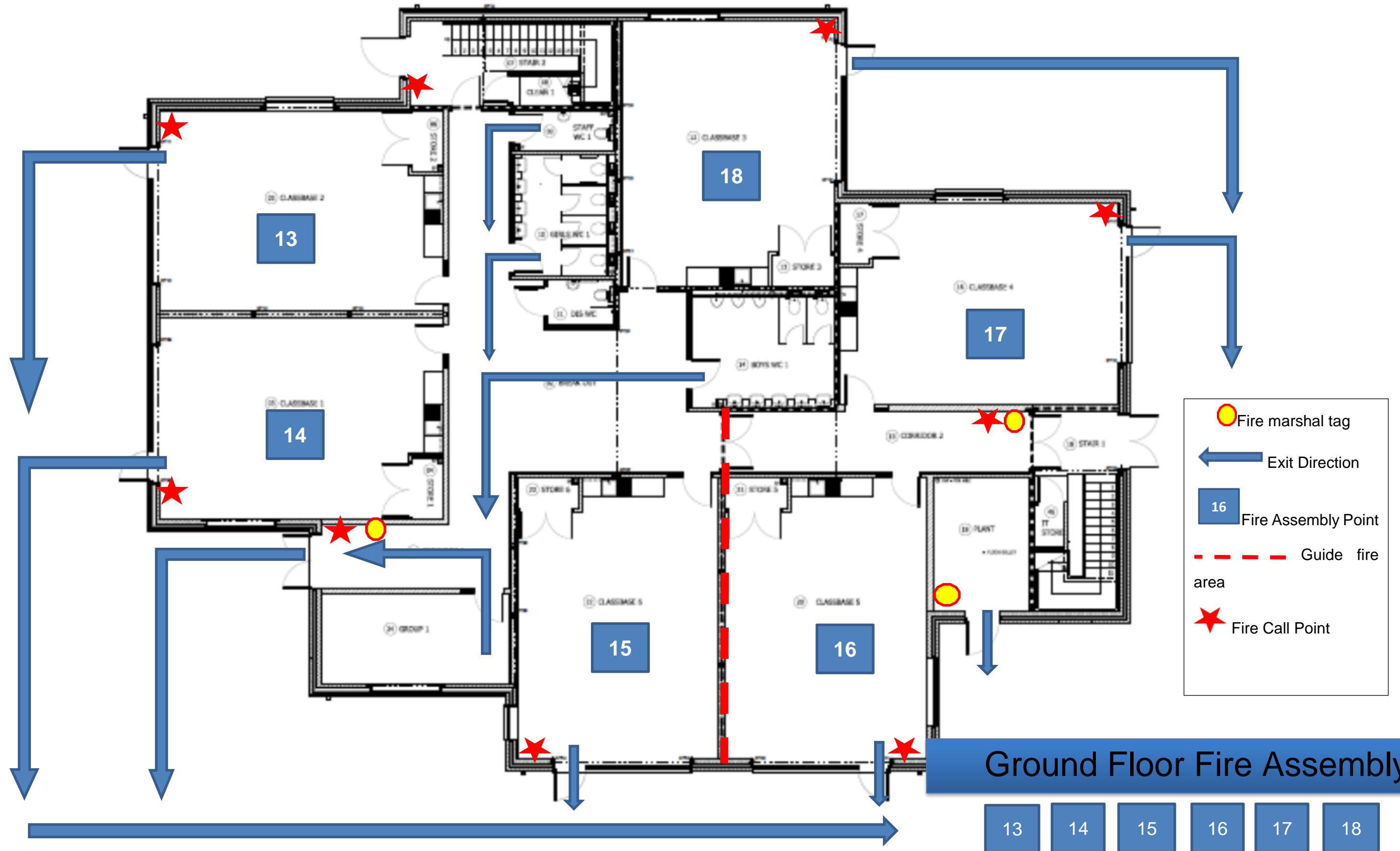




Chesswood Junior School Emergency Evacuation Plan



New Building Ground Floor Evacuation Routes

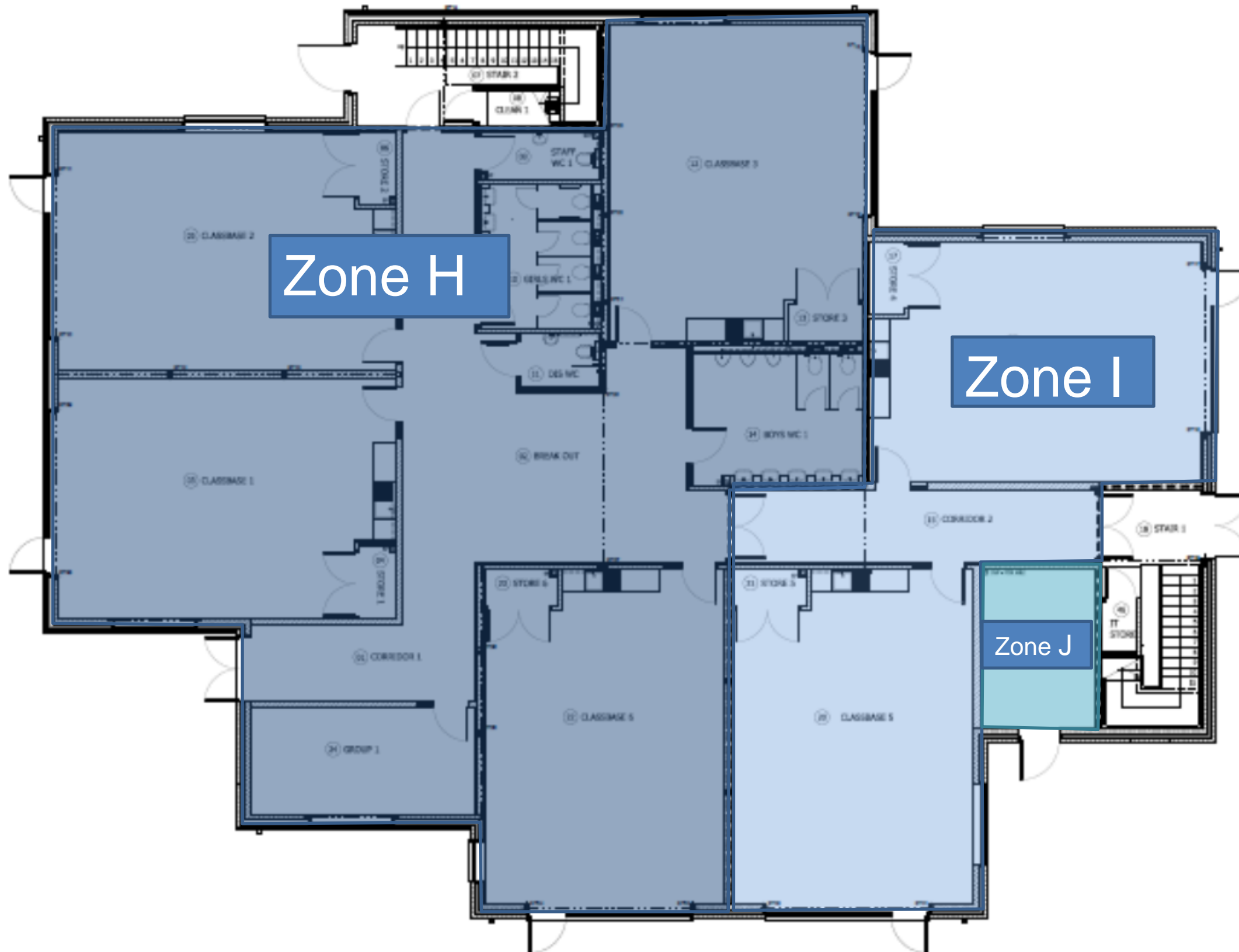




Chesswood Junior School Emergency Evacuation Plan



4. New Building Ground Floor Fire Warden Zones

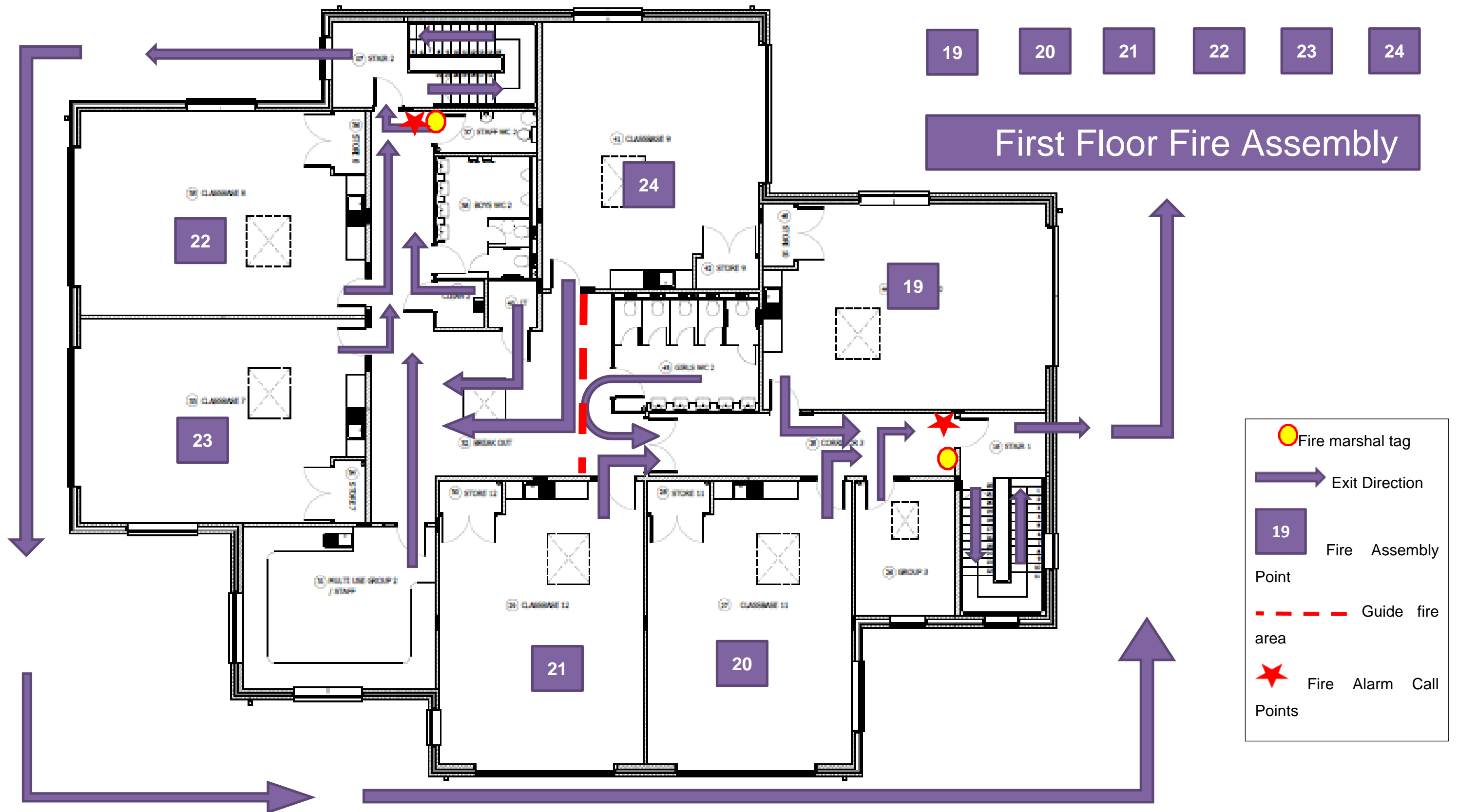




Chesswood Junior School Emergency Evacuation Plan



New Building First Floor Evacuation Routes



First Floor children must give way to Ground Floor classes leaving the



Chesswood Junior School Emergency Evacuation Plan



5. New Building First Floor Fire Warden Zones





Chesswood Junior School Emergency Evacuation Plan Ground Floor





Chesswood Junior School Emergency Evacuation Plan First Floor Classes





Chesswood Junior School
Emergency Evacuation Plan

New Building Playground Entry Routes





Chesswood Junior School Emergency Evacuation Plan Year 3 and 4 Main Building

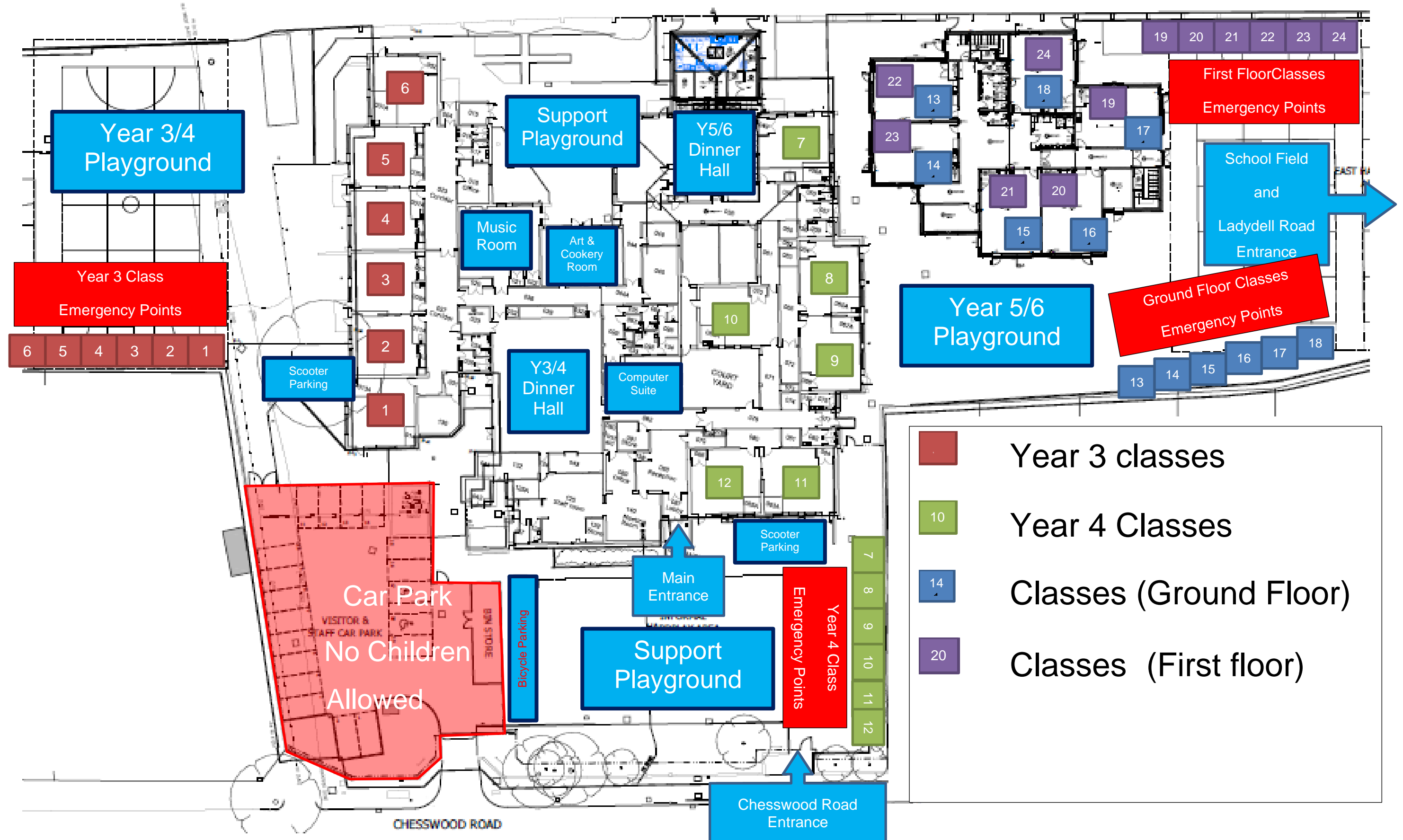




Chesswood Junior School Emergency Evacuation Plan



5.1. Day Time Organisation

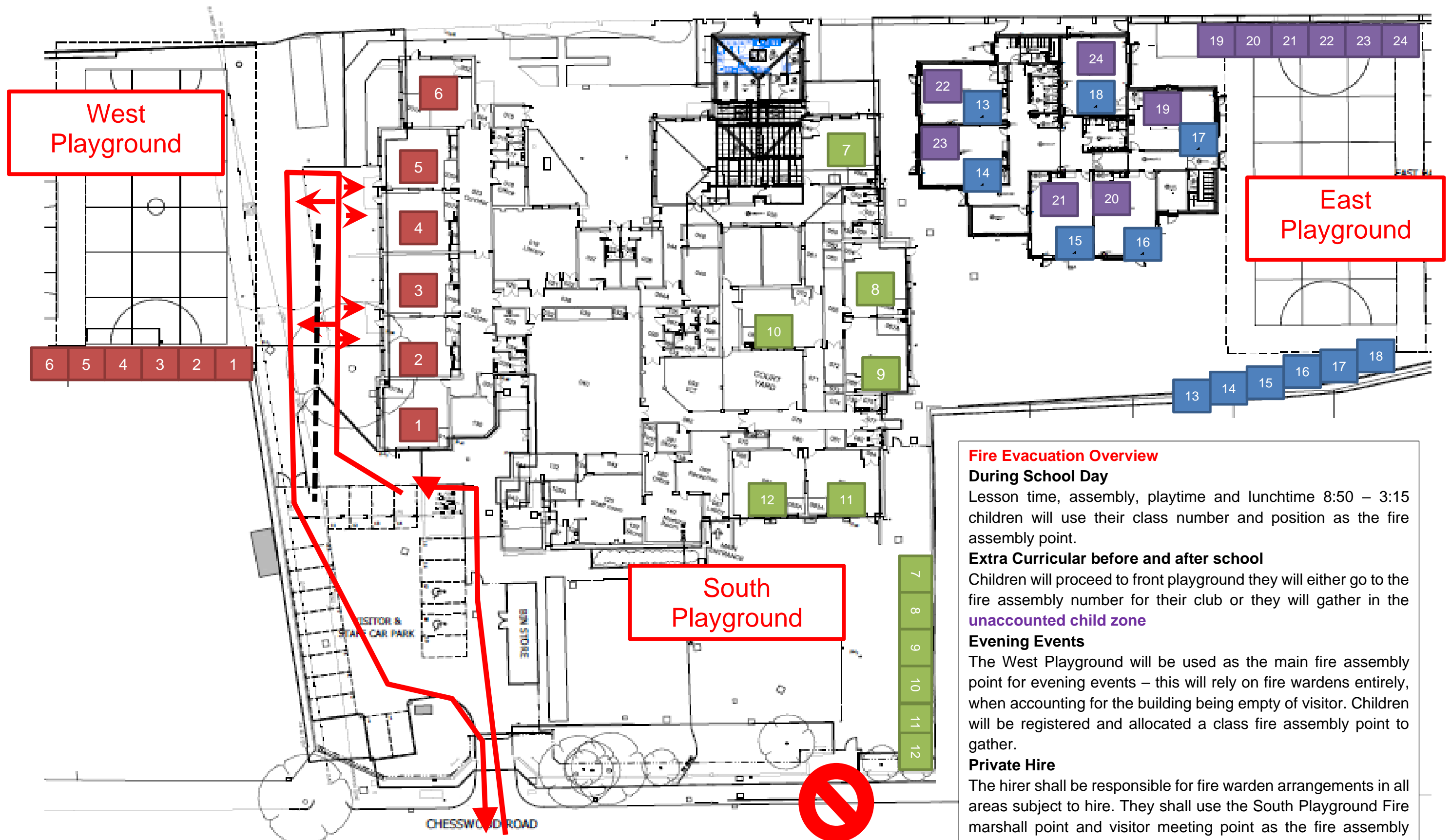




Chesswood Junior School Emergency Evacuation Plan



6. Main Building Fire Zones

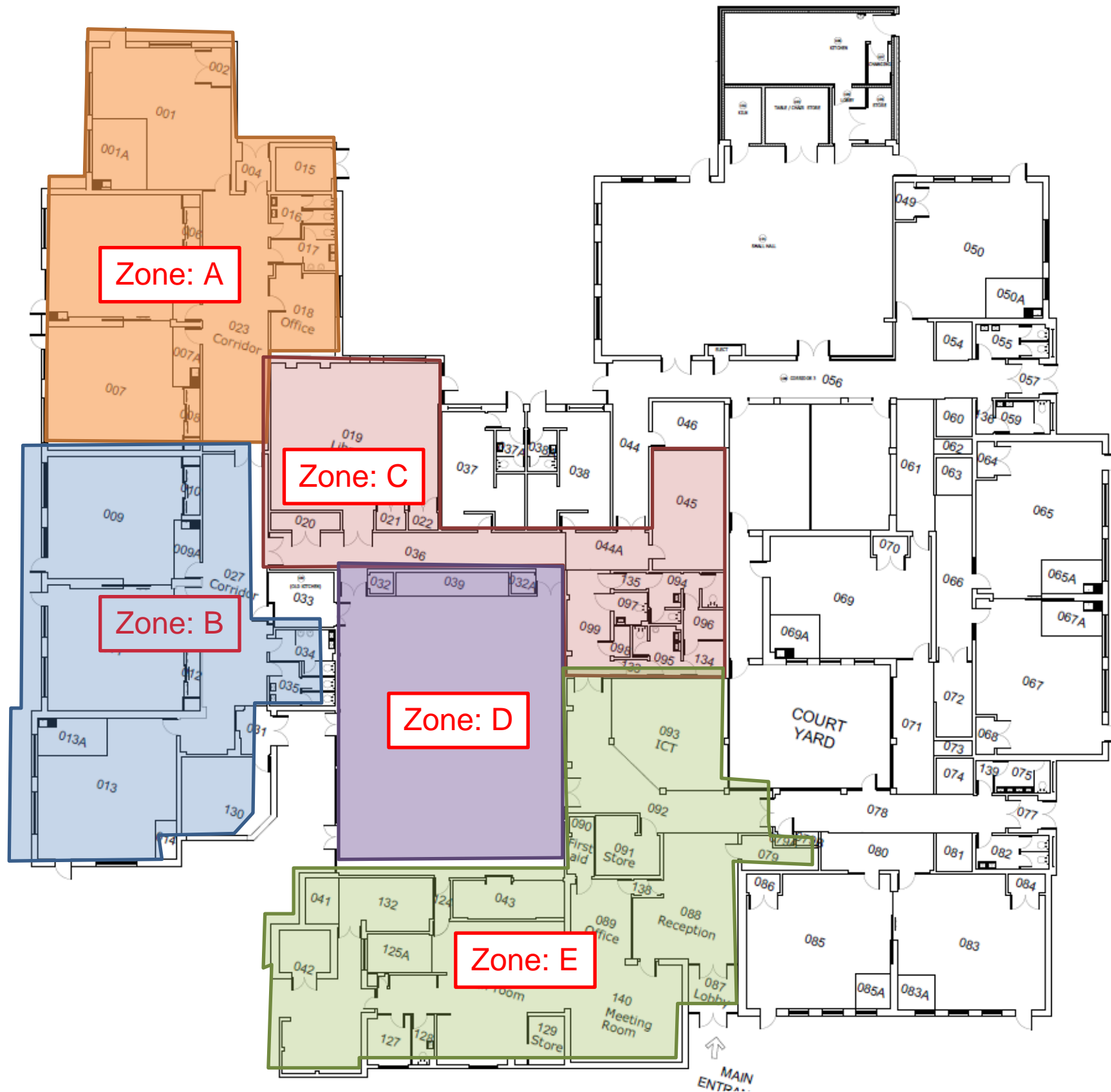




Chesswood Junior School Emergency Evacuation Plan



7. School Disco Fire Warden – Sweep Zones



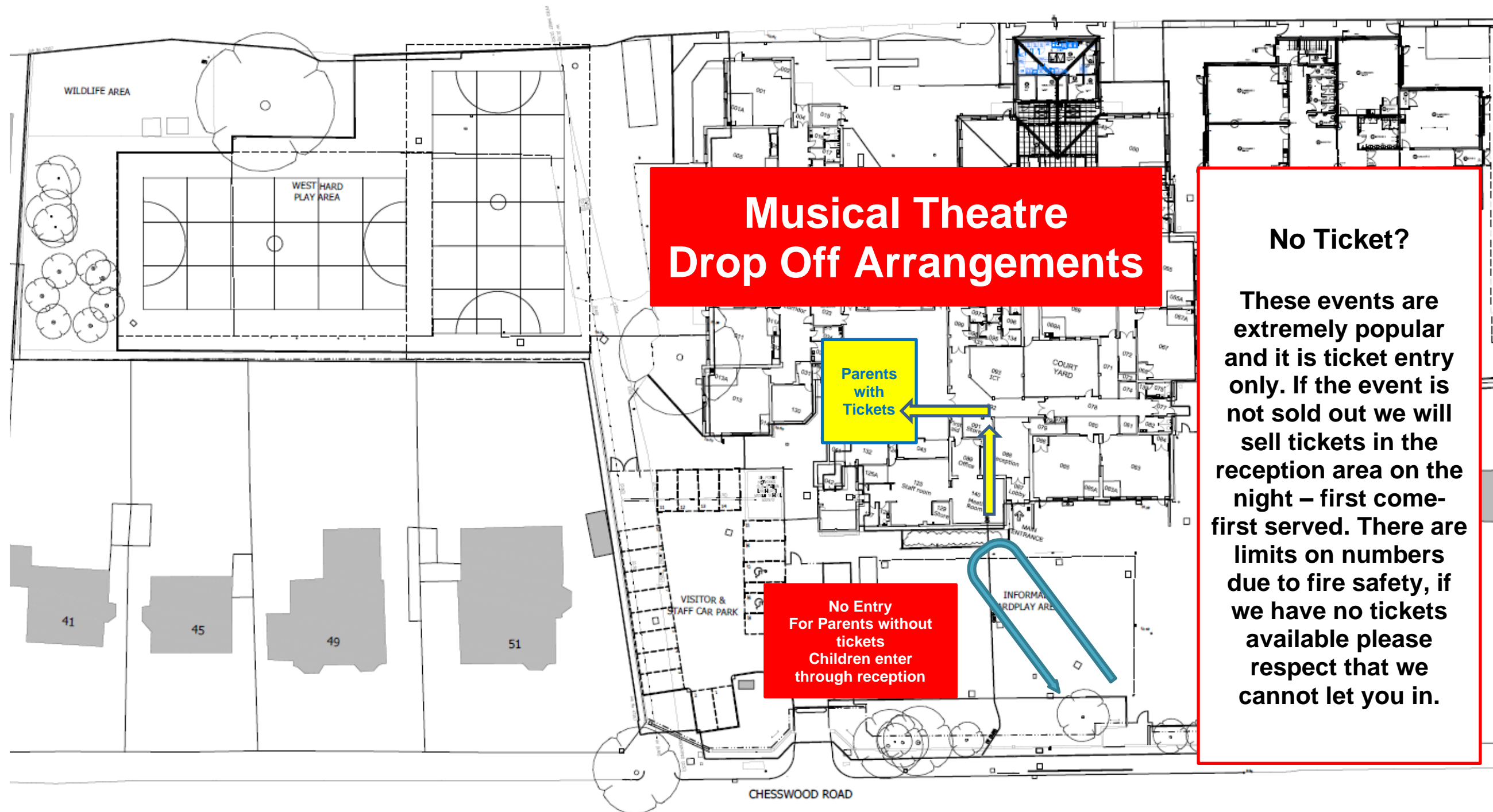
Zone	Warden	Sweep Confirmed
A		
B		
C		
D		
E		
Lead Fire Officer		



Chesswood Junior School Emergency Evacuation Plan



8. Musical Theatre Drop Off

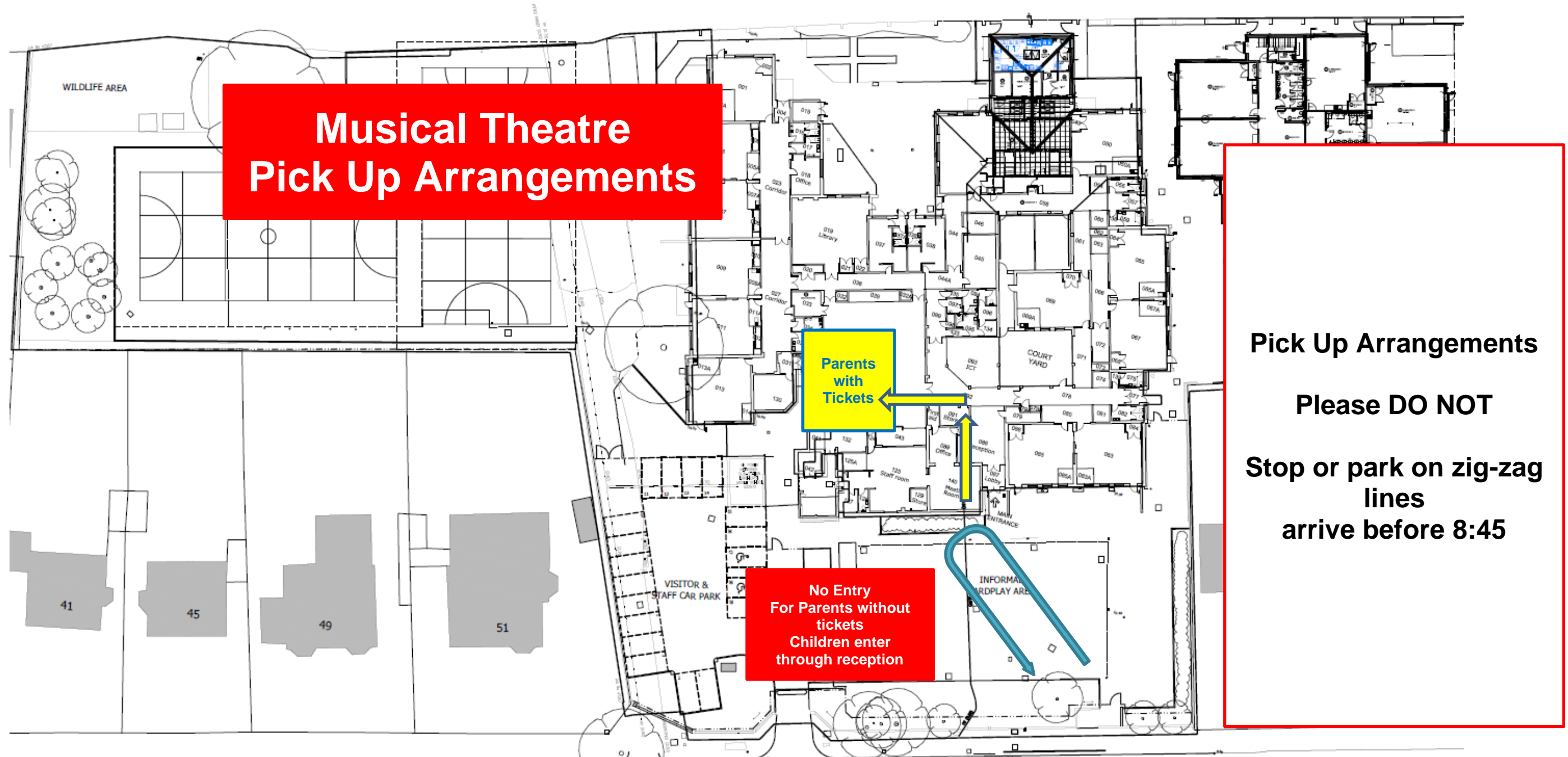




Chesswood Junior School Emergency Evacuation Plan



9. Musical Theatre Drop Off



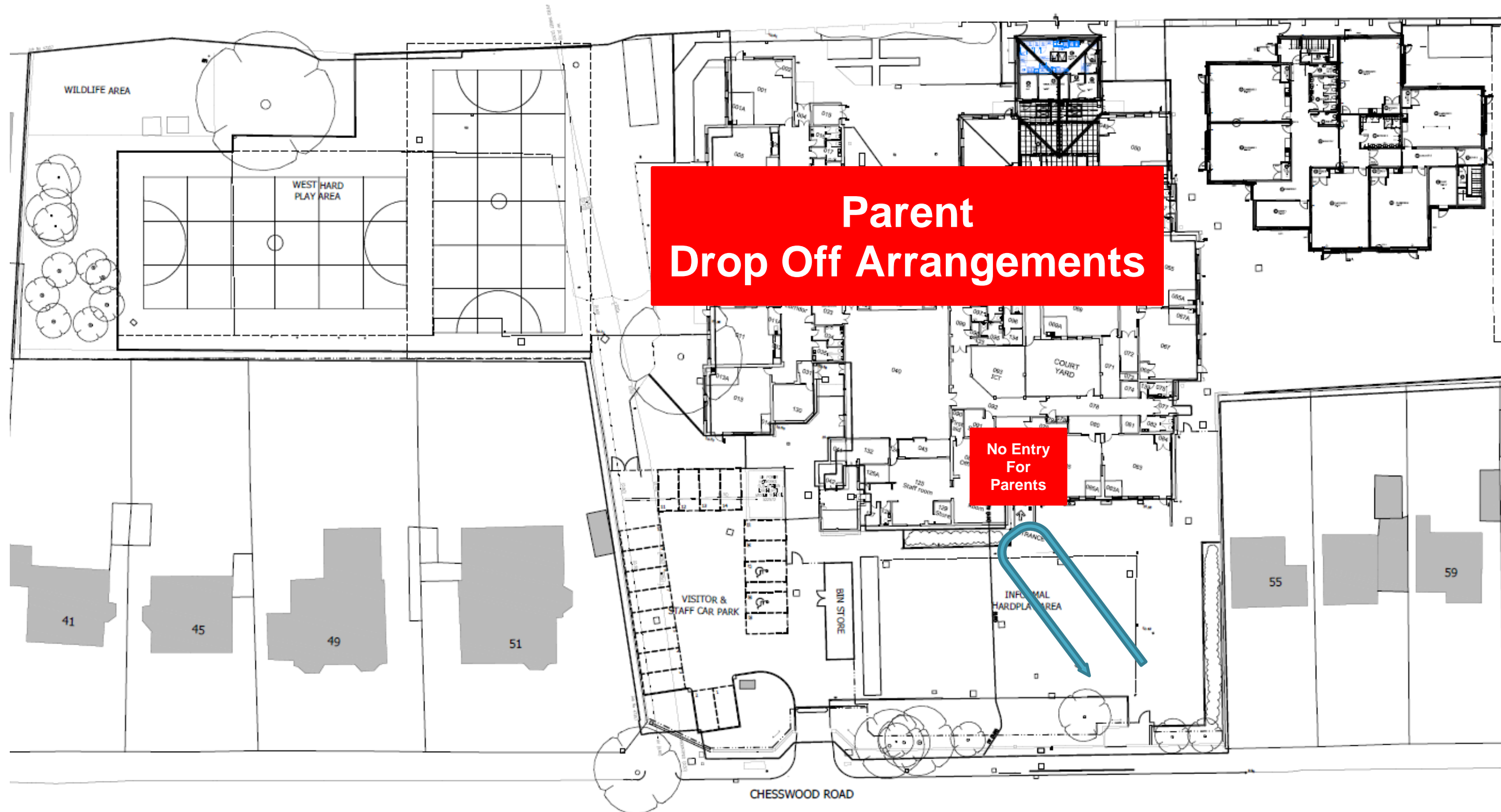
Do not stop or park on the white or yellow zig zag lines – it puts other children at risk, it is selfish, lazy and illegal – don't let it be you!



Chesswood Junior School Emergency Evacuation Plan

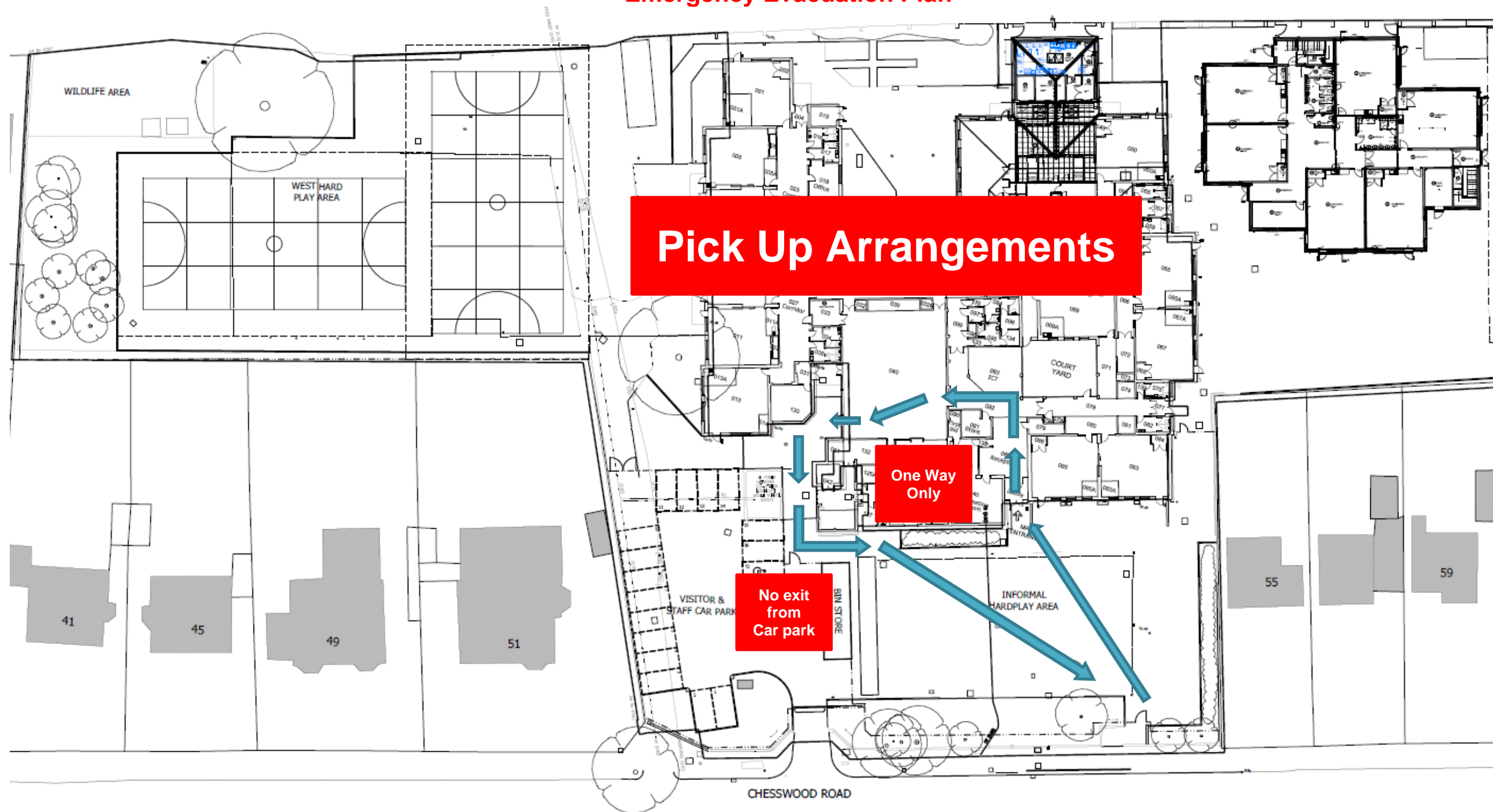


10. School Disco Pick Up Arrangements





Chesswood Junior School Emergency Evacuation Plan





Chesswood Junior School Emergency Evacuation Plan



11. School Disco Evacuation

