

**CHESSWOOD**  
JUNIOR SCHOOL

Dream - Aspire  
Achieve





# CHESSWOOD JUNIOR SCHOOL

## Staffing Structure



### Table of Contents

<b>1. Governance .....</b>	<b>3</b>
<b>2. Leadership Team.....</b>	<b>5</b>
2.1. Senior Leadership Team.....	5
2.2. Learning Leadership Team .....	6
2.3. Wider Leadership Team.....	7
<b>3. Year 3 Team .....</b>	<b>8</b>
3.1. Year 3 Teaching Team.....	8
3.2. Year 3 Academic Support Team.....	9
<b>4. Year 4 Team .....</b>	<b>10</b>
4.1. Year 4 Teaching Team.....	10
4.2. Year 4 Academic Support Team.....	11
<b>5. Year 5 Team .....</b>	<b>12</b>
5.1. Year 5 Teaching Team.....	12
5.2. Year 5 Academic Support Team.....	13
<b>6. Year 6 .....</b>	<b>14</b>
6.1. Year 6 Teaching Team.....	14
6.2. Year 6 Academic Support Team.....	15
<b>7. Additional teaching.....</b>	<b>16</b>
7.1. Specialist teaching .....	16
7.2. HLTA & Tutoring Support.....	17
<b>8. Inclusion Team .....</b>	<b>18</b>
<b>9. School Administration and Support.....</b>	<b>19</b>
<b>10. Premises &amp; Security Team.....</b>	<b>20</b>
<b>11. School Catering .....</b>	<b>Error! Bookmark not defined.</b>
<b>12. Midday Supervision Team .....</b>	<b>21</b>
<b>13. Wrap Around Care.....</b>	<b>22</b>








# CHESSWOOD JUNIOR SCHOOL

## Staffing Structure



### 1. Governance

		Vacant
<b>Chair of Governors</b> <b>Mr Mike Carpenter</b> <a href="mailto:mcarpenter@chesswood.w-sussex.sch.uk"><u>mcarpenter@chesswood.w-sussex.sch.uk</u></a>	<b>Vice Chair of Governors</b> <b>Ms Sao Roque</b> <a href="mailto:croque@chesswood.w-sussex.sch.uk"><u>croque@chesswood.w-sussex.sch.uk</u></a>	<b>Clerk to Governors</b> <b>Vacant</b> <a href="mailto:clerk@chesswood.w-sussex.sch.uk"><u>clerk@chesswood.w-sussex.sch.uk</u></a>
		
<b>Parent Governor</b> <b>Mr Lee Boddy</b> <a href="mailto:lboddy@chesswood.w-sussex.sch.uk"><u>lboddy@chesswood.w-sussex.sch.uk</u></a>	<b>Parent Governor</b> <b>Ms. Sara Kenny</b> <a href="mailto:skenney@chesswood.w-sussex.sch.uk"><u>skenney@chesswood.w-sussex.sch.uk</u></a>	<b>Parent Governor</b> <b>Ms. Kirsty Meddins</b> <a href="mailto:kmeddins@chesswood.w-sussex.sch.uk"><u>kmeddins@chesswood.w-sussex.sch.uk</u></a>
		
<b>Parent Governor</b> <b>Mr. Daniel Noyce</b> <a href="mailto:dnoyce@chesswood.w-sussex.sch.uk"><u>dnoyce@chesswood.w-sussex.sch.uk</u></a>	<b>Community (Co-opted) Governor</b> <b>Mr Steve Allibone</b> <a href="mailto:sallibone@chesswood.w-sussex.sch.uk"><u>sallibone@chesswood.w-sussex.sch.uk</u></a>	<b>Community (Co-opted) Governor</b> <b>Ms Rachel Baker</b> <a href="mailto:rbaker@chesswood.w-sussex.sch.uk"><u>rbaker@chesswood.w-sussex.sch.uk</u></a>





# CHESSWOOD JUNIOR SCHOOL

## Staffing Structure



		
<b>Community (Co-opted) Governor</b> <b>Mrs Hazel Fagon</b> <a href="mailto:hfagon@chesswood.w-sussex.sch.uk"><u>hfagon@chesswood.w-sussex.sch.uk</u></a>	<b>Community (Co-opted) Governor</b> <b>Mr Nik Gilbert</b> <a href="mailto:ngilbert@chesswood.w-sussex.sch.uk"><u>ngilbert@chesswood.w-sussex.sch.uk</u></a>	<b>Community (Co-opted) Governor</b> <b>Mrs Beth Liassides</b> <a href="mailto:bliassides@chesswood.w-sussex.sch.uk"><u>bliassides@chesswood.w-sussex.sch.uk</u></a>
		
<b>Head of School</b> <b>Mr Jez Himsworth</b> <a href="mailto:jhimsworth@chesswood.w-sussex.sch.uk"><u>jhimsworth@chesswood.w-sussex.sch.uk</u></a>	<b>Staff Governor</b> <b>Ms. Una O'Leary</b> <a href="mailto:uoleary@chesswood.w-sussex.sch.uk"><u>uoleary@chesswood.w-sussex.sch.uk</u></a>	<b>Advisor - Assistant Head</b> <b>Mr Chris Yelling</b> <a href="mailto:cyelling@chesswood.w-sussex.sch.uk"><u>cyelling@chesswood.w-sussex.sch.uk</u></a>



# CHESSWOOD JUNIOR SCHOOL

## Staffing Structure



## 2. Leadership Team

### 2.1. Senior Leadership Team

	
<p>Head of School Mr Jez Himsworth <a href="mailto:jhimsworth@chesswood.w-sussex.sch.uk">jhimsworth@chesswood.w-sussex.sch.uk</a></p>	<p>Assistant Head Mr Chris Yelling <a href="mailto:cyelling@chesswood.w-sussex.sch.uk">cyelling@chesswood.w-sussex.sch.uk</a></p>

### 2.2.



# CHESSWOOD JUNIOR SCHOOL

## Staffing Structure

### 2.3. Learning Leadership Team



#### Senior Leadership Team+



Learning Lead  
Mr Nik Gilbert  
[ngilbert@chesswood.w-sussex.sch.uk](mailto:ngilbert@chesswood.w-sussex.sch.uk)



Learning Lead  
Mrs Louise Cox  
[lc Cox@chesswood.w-sussex.sch.uk](mailto:lc Cox@chesswood.w-sussex.sch.uk)



SENCO  
Ms Ness Radcliffe  
[vradcliffe@chesswood.w-sussex.sch.uk](mailto:vradcliffe@chesswood.w-sussex.sch.uk)



Behaviour Lead  
Mr. Paul Barnard  
[pbarnard@chesswood.w-sussex.sch.uk](mailto:pbarnard@chesswood.w-sussex.sch.uk)



# CHESSWOOD JUNIOR SCHOOL

## Staffing Structure



### 2.4. Wider Leadership Team

#### Senior Leadership Team+

		
IT & Premises Manager Mr Ben Miller <a href="mailto:bmiller@chesswood.w-sussex.sch.uk">bmiller@chesswood.w-sussex.sch.uk</a>	School Business Manager, HR & Administration Mrs Treena Beech <a href="mailto:tbeech@chesswood.w-sussex.sch.uk">tbeech@chesswood.w-sussex.sch.uk</a>	



# CHESSWOOD JUNIOR SCHOOL

## Staffing Structure



### 3. Year 3 Team

#### 3.1. Year 3 Teaching Team

Teachers		
		
3DH Class Teacher & Lead Teacher for Year 3 Mr. David Harney <a href="mailto:dharney@chesswood.w-sussex.sch.uk">dharney@chesswood.w-sussex.sch.uk</a>	3CV Class Teacher Mr Cormac Verner <a href="mailto:cverner@chesswood.w-sussex.sch.uk">cverner@chesswood.w-sussex.sch.uk</a>	3SM Class Teacher Mr Sam Masters <a href="mailto:smasters@chesswood.w-sussex.sch.uk">smasters@chesswood.w-sussex.sch.uk</a>
		
3SH Class Teacher M-W Mrs Aimi Smith <a href="mailto:asmith@chesswood.w-sussex.sch.uk">asmith@chesswood.w-sussex.sch.uk</a>	3SH Class Teacher Mrs. Jenny Barton <a href="mailto:jbarton@chesswood.w-sussex.sch.uk">jbarton@chesswood.w-sussex.sch.uk</a>	3EL Class Teacher Mrs Esther Larsson <a href="mailto:elarsson@chesswood.w-sussex.sch.uk">elarsson@chesswood.w-sussex.sch.uk</a>
		
Year 3 SCITT Mr James Scott <a href="mailto:jscott@chesswood.w-sussex.sch.uk">jscott@chesswood.w-sussex.sch.uk</a>		





# CHESSWOOD JUNIOR SCHOOL

## Staffing Structure

### 3.2. Year 3 Academic Support Team



#### Teaching Assistants



& Midday Supervision  
Mrs. Jenny Barton  
[jbarton@chesswood.w-sussex.sch.uk](mailto:jbarton@chesswood.w-sussex.sch.uk)



& Midday Supervision  
Mrs Ilona Zivna  
[izivna@chesswood.w-sussex.sch.uk](mailto:izivna@chesswood.w-sussex.sch.uk)



Miss Chelsea Nurse  
[cnurse@chesswood.w-sussex.sch.uk](mailto:cnurse@chesswood.w-sussex.sch.uk)



& Midday Supervision  
Mrs Mel Grimster  
[mgrimster@chesswood.w-sussex.sch.uk](mailto:mgrimster@chesswood.w-sussex.sch.uk)



Mrs Katy Haddick  
[khaddick@chesswood.w-sussex.sch.uk](mailto:khaddick@chesswood.w-sussex.sch.uk)



Mrs Silvia Pinto  
[spinto@chesswood.w-sussex.sch.uk](mailto:spinto@chesswood.w-sussex.sch.uk)



Mrs Patsy Jones  
[pjones@chesswood.w-sussex.sch.uk](mailto:pjones@chesswood.w-sussex.sch.uk)



& Midday Supervision  
Miss Maddy Carver  
[mcarver@chesswood.w-sussex.sch.uk](mailto:mcarver@chesswood.w-sussex.sch.uk)



Ms. Sheena Bryant  
[sbryant@chesswood.w-sussex.sch.uk](mailto:sbryant@chesswood.w-sussex.sch.uk)



# CHESSWOOD JUNIOR SCHOOL

## Staffing Structure



### 4. Year 4 Team

#### 4.1. Year 4 Teaching Team

Teachers		
		
4UO Class Teacher & Lead Teacher for Year 4 & NEU Representative Mrs Una O'Leary <a href="mailto:uoleary@chesswood.w-sussex.sch.uk">uoleary@chesswood.w-sussex.sch.uk</a>	4LB Class Teacher Miss Lynsey Bagnall <a href="mailto:lbagnall@chesswood.w-sussex.sch.uk">lbagnall@chesswood.w-sussex.sch.uk</a>	4CH Class Teacher Miss Caitlin Hayles <a href="mailto:chayles@chesswood.w-sussex.sch.uk">chayles@chesswood.w-sussex.sch.uk</a>
		
4PB Class Teacher Mrs. Laura Heater <a href="mailto:lheater@chesswood.w-sussex.sch.uk">lheater@chesswood.w-sussex.sch.uk</a>	Year 4 School Centred Initial Teacher Training Miss Kimmy Greathead <a href="mailto:kgreathead@chesswood.w-sussex.sch.uk">kgreathead@chesswood.w-sussex.sch.uk</a>	



# CHESSWOOD JUNIOR SCHOOL

## Staffing Structure

### 4.2. Year 4 Academic Support Team



#### Teaching Assistants



Mrs Claire Gain  
[cgain@chesswood.w-sussex.sch.uk](mailto:cgain@chesswood.w-sussex.sch.uk)



Mrs Miriam Giles  
[mgiles@chesswood.w-sussex.sch.uk](mailto:mgiles@chesswood.w-sussex.sch.uk)



& Midday Supervision  
Mrs. Chantelle Jack  
[cjack@chesswood.w-sussex.sch.uk](mailto:cjack@chesswood.w-sussex.sch.uk)



& Midday Supervision  
Mrs. Victoria Scales  
[vscales@chesswood.w-sussex.sch.uk](mailto:vscales@chesswood.w-sussex.sch.uk)



Mrs Silvia Pinto  
[spinto@chesswood.w-sussex.sch.uk](mailto:spinto@chesswood.w-sussex.sch.uk)



& Midday Supervision  
Suzy Overton  
[soverton@chesswood.w-sussex.sch.uk](mailto:soverton@chesswood.w-sussex.sch.uk)



& Midday Supervision  
Miss Beth Fryer  
[bfryer@chesswood.w-sussex.sch.uk](mailto:bfryer@chesswood.w-sussex.sch.uk)





# CHESSWOOD JUNIOR SCHOOL

## Staffing Structure



### 5. Year 5 Team

#### 5.1. Year 5 Teaching Team

Teachers		
		
5HM Class Teacher (W-F) & Lead Teacher for Year 5 Ms. Zoe Monger <a href="mailto:zmonger@chesswood.w-sussex.sch.uk">zmonger@chesswood.w-sussex.sch.uk</a>	5HM Class Teacher (M-F) Mrs Jess Hayman <a href="mailto:jhayman@chesswood.w-sussex.sch.uk">jhayman@chesswood.w-sussex.sch.uk</a>	5ML Class Teacher Mrs Macarla Lucas <a href="mailto:mlucas@chesswood.w-sussex.sch.uk">mlucas@chesswood.w-sussex.sch.uk</a>
		
5AL Class Teacher Mr Alan Light <a href="mailto:alight@chesswood.w-sussex.sch.uk">alight@chesswood.w-sussex.sch.uk</a>	5EV Class Teacher Miss Emily Varley <a href="mailto:evarley@chesswood.w-sussex.sch.uk">evarley@chesswood.w-sussex.sch.uk</a>	5CR Class Teacher Ms Claire Read <a href="mailto:cread@chesswood.w-sussex.sch.uk">cread@chesswood.w-sussex.sch.uk</a>
		
Year 5 School Centred Initial Teacher Training Miss Becky Ford <a href="mailto:bford@chesswood.w-sussex.sch.uk">bford@chesswood.w-sussex.sch.uk</a>		





# CHESSWOOD JUNIOR SCHOOL

## Staffing Structure

### 5.2. Year 5 Academic Support Team



#### Teaching Assistants



& Midday Supervision  
Mr Shaun Oliver  
[soliver@chesswood.w-sussex.sch.uk](mailto:soliver@chesswood.w-sussex.sch.uk)



Miss Tanya Fellows  
[tfellows@chesswood.w-sussex.sch.uk](mailto:tfellows@chesswood.w-sussex.sch.uk)



& Midday Supervision  
Mrs. Ashlie Welch  
[awelch@chesswood.w-sussex.sch.uk](mailto:awelch@chesswood.w-sussex.sch.uk)



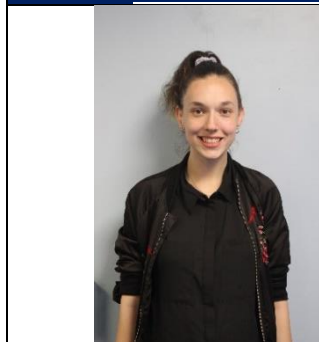
& Midday Supervision  
Miss Maria Scott  
[mscott@chesswood.w-sussex.sch.uk](mailto:mscott@chesswood.w-sussex.sch.uk)



& Midday Supervision  
Miss Gemma Board  
[gboard@chesswood.w-sussex.sch.uk](mailto:gboard@chesswood.w-sussex.sch.uk)



Mrs. Debs Cuthbertson  
[dcuthbertson@chesswood.w-sussex.sch.uk](mailto:dcuthbertson@chesswood.w-sussex.sch.uk)



& Midday Supervision  
Miss Maddy Carver  
[mcarver@chesswood.w-sussex.sch.uk](mailto:mcarver@chesswood.w-sussex.sch.uk)



& Midday Supervision  
Mrs. Vicky O'Byrne  
[vobyrne@chesswood.w-sussex.sch.uk](mailto:vobyrne@chesswood.w-sussex.sch.uk)



& Midday Supervision  
Miss Molly Angell  
[mangel@chesswood.w-sussex.sch.uk](mailto:mangel@chesswood.w-sussex.sch.uk)



& Midday Supervision  
Miss Jamie Fontana  
[jfontana@chesswood.w-sussex.sch.uk](mailto:jfontana@chesswood.w-sussex.sch.uk)



# CHESSWOOD JUNIOR SCHOOL

## Staffing Structure



### 6. Year 6

#### 6.1. Year 6 Teaching Team

Teachers		
		
<b>6NB Class Teacher &amp; Lead Teacher for Year 6 &amp; NEU Representative</b> <b>Mrs Naomi Bournier</b> <a href="mailto:nbournier@chesswood.w-sussex.sch.uk"><u>nbournier@chesswood.w-sussex.sch.uk</u></a>	<b>6AH Class Teacher</b> <b>Mrs Alison Hamilton</b> <a href="mailto:ahamilton@chesswood.w-sussex.sch.uk"><u>ahamilton@chesswood.w-sussex.sch.uk</u></a>	<b>6SJ Class Teacher</b> <b>Mrs Sam Johnson</b> <a href="mailto:sjohnson@chesswood.w-sussex.sch.uk"><u>sjohnson@chesswood.w-sussex.sch.uk</u></a>
		
<b>6JS Class Teacher</b> <b>Miss Jo Stanley</b> <a href="mailto:jstanley@chesswood.w-sussex.sch.uk"><u>jstanley@chesswood.w-sussex.sch.uk</u></a>	<b>6CL Class Teacher</b> <b>Miss Catherine Laybourn</b> <a href="mailto:claybourn@chesswood.w-sussex.sch.uk"><u>claybourn@chesswood.w-sussex.sch.uk</u></a>	<b>Tutor: Disadvantaged</b> <b>Mrs. Ulrika Wedberg</b> <a href="mailto:uwedberg@chesswood.w-sussex.sch.uk"><u>uwedberg@chesswood.w-sussex.sch.uk</u></a>



# CHESSWOOD JUNIOR SCHOOL

## Staffing Structure

### 6.2. Year 6 Academic Support Team



#### Teaching Assistants



& Midday Supervision  
Mrs Becky Scarsbrook  
[rscarsbrook@chesswood.w-sussex.sch.uk](mailto:rscarsbrook@chesswood.w-sussex.sch.uk)



& Midday Supervision  
Miss Keely Eldred  
[keldred@chesswood.w-sussex.sch.uk](mailto:keldred@chesswood.w-sussex.sch.uk)



& Midday Supervision  
Miss Gemma Board  
[gboard@chesswood.w-sussex.sch.uk](mailto:gboard@chesswood.w-sussex.sch.uk)



& Midday Supervision  
Miss Hope Yelling  
[hyelling@chesswood.w-sussex.sch.uk](mailto:hyelling@chesswood.w-sussex.sch.uk)




# CHESSWOOD JUNIOR SCHOOL

## Staffing Structure



### 7. Additional teaching

#### 7.1. Specialist teaching

Music		
	<p>Mrs Claire Cossins <a href="mailto:ccossins@chesswood.w-sussex.sch.uk">ccossins@chesswood.w-sussex.sch.uk</a></p>	
P.E. & Sport		
	<p>Mr Tim Quick <a href="mailto:tquick@chesswood.w-sussex.sch.uk">tquick@chesswood.w-sussex.sch.uk</a></p>	<p>Mr Andrew Archer <a href="mailto:aarcher@chesswood.w-sussex.sch.uk">aarcher@chesswood.w-sussex.sch.uk</a></p>





# CHESSWOOD JUNIOR SCHOOL

## Staffing Structure

### 7.2. HLTA & Tutoring Support

		
<p>Mrs Sofiya Lulham EAL &amp; HLTA <a href="mailto:slulham@chesswood.w-sussex.sch.uk">slulham@chesswood.w-sussex.sch.uk</a></p>	<p>Mr Graham Powell HLTA <a href="mailto:gpowell@chesswood.w-sussex.sch.uk">gpowell@chesswood.w-sussex.sch.uk</a></p>	<p>Miss Maddy Carver HLTA <a href="mailto:mcarver@chesswood.w-sussex.sch.uk">mcarver@chesswood.w-sussex.sch.uk</a></p>
		
<p>Miss Kath Sheppard SEN HLTA <a href="mailto:ksheppard@chesswood.w-sussex.sch.uk">ksheppard@chesswood.w-sussex.sch.uk</a></p>	<p>Mrs. Ulrika Wedberg Disadvantaged Tutor <a href="mailto:uwedberg@chesswood.w-sussex.sch.uk">uwedberg@chesswood.w-sussex.sch.uk</a></p>	<p>Mrs Katy Haddick <a href="mailto:khaddick@chesswood.w-sussex.sch.uk">khaddick@chesswood.w-sussex.sch.uk</a></p>



# CHESSWOOD JUNIOR SCHOOL

## Staffing Structure



### 8. Inclusion Team

		
<b>Safeguarding Manager</b> Mrs Sally Harvey <a href="mailto:sharvey@chesswood.w-sussex.sch.uk">sharvey@chesswood.w-sussex.sch.uk</a>	<b>SEN HLTA</b> Miss Kath Sheppard <a href="mailto:ksheppard@chesswood.w-sussex.sch.uk">ksheppard@chesswood.w-sussex.sch.uk</a>	<b>Family Liaison &amp; Pupil Premium</b> Mrs Tracey Rainford <a href="mailto:trainford@chesswood.w-sussex.sch.uk">trainford@chesswood.w-sussex.sch.uk</a>
		
<b>Learning Mentor - Attendance</b> Mrs Elaine Butler <a href="mailto:ebutler@chesswood.w-sussex.sch.uk">ebutler@chesswood.w-sussex.sch.uk</a>	<b>Learning Mentor - Behaviour</b> Miss Louise Oswald <a href="mailto:loswald@chesswood.w-sussex.sch.uk">loswald@chesswood.w-sussex.sch.uk</a>	<b>Learning Mentor - Safeguarding &amp; CLA</b> Miss Sharon Main <a href="mailto:smain@chesswood.w-sussex.sch.uk">smain@chesswood.w-sussex.sch.uk</a>



# CHESSWOOD JUNIOR SCHOOL

## Staffing Structure



### 9. School Administration and Support

		
<p>Reception &amp; Club's Administrator Miss Leonie Popplestone <a href="mailto:ipopplestone@chesswood.w-sussex.sch.uk">ipopplestone@chesswood.w-sussex.sch.uk</a></p>	<p>School Administrator and Communication Lead Miss Sylwia Switalska <a href="mailto:sswitalska@chesswood.w-sussex.sch.uk">sswitalska@chesswood.w-sussex.sch.uk</a></p>	<p>School Administrator Mrs Tracy Smith <a href="mailto:tsmith@chesswood.w-sussex.sch.uk">tsmith@chesswood.w-sussex.sch.uk</a></p>
		
<p>School Administrator Mrs Charlie Falkingham <a href="mailto:cfalkingham@chesswood.w-sussex.sch.uk">cfalkingham@chesswood.w-sussex.sch.uk</a></p>	<p>Finance Assistant &amp; Trip Co-ordinator Mrs. Hannah Carter <a href="mailto:hcarter@chesswood.w-sussex.sch.uk">hcarter@chesswood.w-sussex.sch.uk</a></p>	<p>IT Apprentice, School Media Ms. Chloe Robertson <a href="mailto:crobertson@chesswood.w-sussex.sch.uk">crobertson@chesswood.w-sussex.sch.uk</a></p>



# CHESSWOOD JUNIOR SCHOOL

## Staffing Structure



### 10. Premises & Security Team

		
<p>Cleaner &amp; Midday Supervision Mrs Dee Cook <a href="mailto:dcook@chesswood.w-sussex.sch.uk">dcook@chesswood.w-sussex.sch.uk</a></p>	<p>Cleaner &amp; Midday Supervision Mrs Jayne Bryder <a href="mailto:jbryder@chesswood.w-sussex.sch.uk">jbryder@chesswood.w-sussex.sch.uk</a></p>	<p>Cleaner &amp; Food Service Miss Crissima Pearce <a href="mailto:cpearce@chesswood.w-sussex.sch.uk">cpearce@chesswood.w-sussex.sch.uk</a></p>
		
<p>Cleaner &amp; Security Officer Mr Toby Wilson <a href="mailto:twilson@chesswood.w-sussex.sch.uk">twilson@chesswood.w-sussex.sch.uk</a></p>		





# CHESSWOOD JUNIOR SCHOOL

## Staffing Structure



### 11. Midday Supervision Team

#### Midday Supervision Team



**Mrs Emma Atkinson**  
[eatkinson@chesswood.w-sussex.sch.uk](mailto:eatkinson@chesswood.w-sussex.sch.uk)



**Miss Stacey Clements**  
[sclements@chesswood.w-sussex.sch.uk](mailto:sclements@chesswood.w-sussex.sch.uk)



**Mrs Jade Forshaw**  
[jforshaw@chesswood.w-sussex.sch.uk](mailto:jforshaw@chesswood.w-sussex.sch.uk)



**Mrs Rose Marchant**  
[rmarchant@chesswood.w-sussex.sch.uk](mailto:rmarchant@chesswood.w-sussex.sch.uk)



**Ms Guluzar Yildirim**  
[gyildirim@chesswood.w-sussex.sch.uk](mailto:gyildirim@chesswood.w-sussex.sch.uk)



# CHESSWOOD JUNIOR SCHOOL

## Staffing Structure



### 12. Wrap Around Care



Breakfast Club Assistant  
Mrs Dee Cook  
[dcook@chesswood.w-sussex.sch.uk](mailto:dcook@chesswood.w-sussex.sch.uk)



Breakfast Club Assistant  
Mrs Vicky O'Byrne  
[vobyrne@chesswood.w-sussex.sch.uk](mailto:vobyrne@chesswood.w-sussex.sch.uk)



Breakfast Club Assistant  
Mrs Jane Bryder  
[jbryder@chesswood.w-sussex.sch.uk](mailto:jbryder@chesswood.w-sussex.sch.uk)



After School Leader  
Mrs Sri Purches  
[spurches@chesswood.w-sussex.sch.uk](mailto:spurches@chesswood.w-sussex.sch.uk)



After School Club Assistant  
Miss Ilona Zivna  
[izivna@chesswood.w-sussex.sch.uk](mailto:izivna@chesswood.w-sussex.sch.uk)



After School Club Assistant  
Mrs Sofiya Lulham  
[slulham@chesswood.w-sussex.sch.uk](mailto:slulham@chesswood.w-sussex.sch.uk)



After School Club Assistant  
Ms Guluzar Yildrim  
[gyildrim@chesswood.w-sussex.sch.uk](mailto:gyildrim@chesswood.w-sussex.sch.uk)



After School Support & Walking Bus  
Miss Stacey Clements  
[sclements@chesswood.w-sussex.sch.uk](mailto:sclements@chesswood.w-sussex.sch.uk)



After School Assistant & Walking Bus  
Ms Lailani Mansfield  
[lmansfield@chesswood.w-sussex.sch.uk](mailto:lmansfield@chesswood.w-sussex.sch.uk)



## CHESSWOOD JUNIOR SCHOOL

### Staffing Structure



After School Club  
Assistant  
Mrs Claire Victory  
[cvictory@chesswood.w-sussex.sch.uk](mailto:cvictory@chesswood.w-sussex.sch.uk)



After School Club  
Assistant - Walking Bus  
Mrs Sarah Tester  
[stester@chesswood.w-sussex.sch.uk](mailto:stester@chesswood.w-sussex.sch.uk)



After School Club Assistant -  
Walking Bus  
Mrs Kim Skinner  
[kskinner@chesswood.w-sussex.sch.uk](mailto:kskinner@chesswood.w-sussex.sch.uk)



After School Club  
Assistant & Walking Bus  
Mrs Olesia Sydorenko  
[osydorenko@chesswood.w-sussex.sch.uk](mailto:osydorenko@chesswood.w-sussex.sch.uk)



After School Club  
Assistant -Walking Bus  
Ms. Sheena Bryant  
[sbryant@chesswood.w-sussex.sch.uk](mailto:sbryant@chesswood.w-sussex.sch.uk)