



# CHESSWOOD JUNIOR SCHOOL

**Home of Bright Sparks**

Chesswood Road Worthing West Sussex BN11 2AA

**Head Teacher: Mr Andrew Jolley**

[www.chesswood.w-sussex.sch.uk](http://www.chesswood.w-sussex.sch.uk)

[office@chesswood.w-sussex.sch.uk](mailto:office@chesswood.w-sussex.sch.uk)

Tel: Worthing (01903) 204141/2



Thursday, 12 March 2020

## Covid-19 Corona Virus

Dear Parent,

I am writing to confirm that it remains broadly [business as usual at Chesswood](#). Following our letter in February we have had consistent plans in place. As things develop, we have been planning carefully considering the least disruptive ways of maintaining children's learning and keeping the community safe.

Unfortunately, there are many uncertainties in relation to Corona Virus and, to a large extent, this has not been helped by the vast array of information that is reported differently in different newspapers and online, much of which is pure speculation and is leading to significant anxiety for some families.

**The government are expected to move into the delay phase of their process at some stage but that doesn't mean immediate automatic, no notice or blanket school closures.** Smaller changes could and should be taken within schools to avoid or delay school closures being a necessity but, in time, this may be required. Chesswood Junior School is only likely to close if:

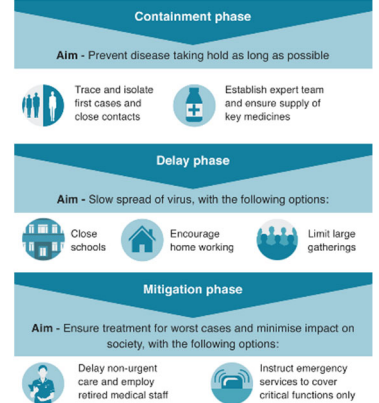
- The government closes all schools
- We are directed by Public Health England as a result of linked cases to our school community

We are planning for a wide range of eventualities at the current time and will communicate the positive steps we will take if and when such eventualities arise with parents. **Our key focus during this difficult period will be to keep the school open and to ensure children have the least disruption to learning as possible. Should the school need to close wholly or partly (limited community service) we will ensure that daily updates to support learning activities from home are communicated through the school website, via twitter and facebook.**

Some smaller changes that we will take to reduce risks of spreading the virus still further:

- **Any and all school visitors, at any time of day**, requiring access to either school building must enter through reception and must use the hand sanitizer provided at the entrance before going further.
- Postpone any non-essential large community events until 1<sup>st</sup> June e.g. PTA film night 27<sup>th</sup> March.
- Cancel spring parent-child conference and parent-teacher evenings. Parents will have further school reports issued in April and we hope the conferences and parent-teacher evenings will go ahead as planned in July once this period passes. Should there be any significant questions, queries or concerns please don't hesitate to email your child's class teacher during this period.
- Risk assess inter-school Sports & cultural events liaising with local schools – all events remain on at this time.
- Ask families to avoid sending elderly (age 70+) relatives or friends to collect children on the school site until further notice for their safety.

### Government phased response to coronavirus



**DREAM – ASPIRE - ACHIEVE**

- Reduce large gatherings in school e.g. Phase assemblies Year 3&4 together and Year 5&6 together – will be phased out or time reduced until the virus comes back under control. Year group assemblies will continue but remain under review.
- The Year 6 Michelham Priory will go ahead as planned as risks remain very low for the visit, at the current time. However, the planned Year 5 visit to Worthing Museum and Worthing Town Trail has been postponed until further notice.
- We have further extended cleaning hours for our premises team to ensure door handles, bannisters, taps are constantly being cleaned throughout the day.
- Children will not be permitted in the school building at break or lunch time (other than to eat lunch or go to the loo!) this will provide an opportunity for further cleaning e.g. computer keyboards, IPADs and other contact points.

Until Public Health England advice changes, all children are expected to attend school as normal, unless there is a clear medical reason not to or

- conditions have been met in line with Public Health England's self-isolation guide for a child at the time.
- a parent has been directed by Public Health England to self-isolate their child.

Where the above conditions are not met and there is not an exceptional reason for absence, an absence will continue to be unauthorised, at this time. If parents do need to self isolate it is important that they contact the school office to confirm this so we are able to keep track of developments within our school community.

Further (trustworthy!) information:

<https://www.gov.uk/government/topical-events/coronavirus-covid-19-uk-government-response>

Public Health England

<https://campaignresources.phe.gov.uk/resources/campaigns/101-coronavirus-/resources>

Public health matters - blog

<https://publichealthmatters.blog.gov.uk/2020/01/23/wuhan-novel-coronavirus-what-you-need-to-know/>

NHS Overview

<https://www.nhs.uk/conditions/coronavirus-covid-19/>

NHS Handwashing

<https://www.youtube.com/watch?v=S9VjeIWLnEg>

<https://youtu.be/bQCP7waTRWU>

BBC News Round Reduce anxiety for children

<https://www.bbc.co.uk/newsround/51481330>

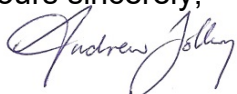
BBC Health

<https://www.bbc.co.uk/news/health-51711227>

And just to cheer you up a bit and take a more light-hearted look at things:

<https://www.youtube.com/watch?v=HSD1d-6P6qI>

Yours sincerely,



**DREAM – ASPIRE - ACHIEVE**