



Assessment: M39 - Convert time

Write into maths assessment book and give a full answer with reasoning at the end.



Kirsty ran a race in one and a half minutes.

Mina took 10 seconds longer.

How many **seconds** did Mina take to run the race?

One and a half minutes = 90 seconds

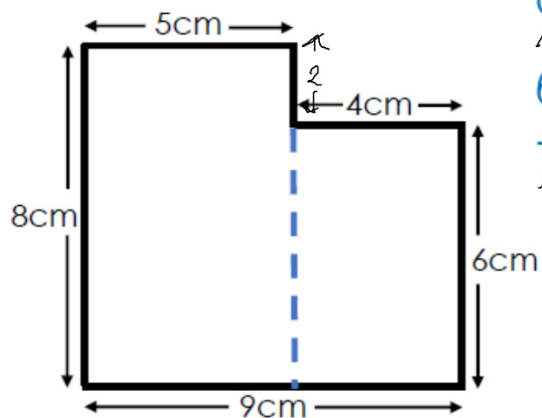
10 seconds plus 90 seconds = 100 seconds

seconds



Spot the mistake

What is the area of the shape?



$$\begin{array}{l} 5 \quad 40 \\ \cancel{9} \times 8 = \cancel{72} \\ 6 \times 4 = 24 \\ \cancel{72} + 24 = \cancel{96} \text{cm}^2 \\ 40 \quad 64 \end{array}$$



Turbo Maths

Operations

Form of answer

$$6 \overline{) 82} \begin{array}{r} 13 \text{ r } 4 \end{array}$$

Question	Answer
Eggs are packed in boxes of 6. The farmer has 82 eggs. How many boxes does he need?	14 boxes
A sunflower grows to a height of 82cm in 6 weeks. On average, how many centimetres does it grow each week?	13.4cm
82 children turn up for a 6-a-side football tournament. How many teams can be made? Teams can have substitutes.	13 teams
An artist works on a masterpiece for 82 hours over 6 days. On average, how long does she work each day?	13 hrs $\frac{1}{2}$



[Turbo Maths](#)

Vocabulary

Explain the meaning of... NUMBER

remainder

interpret

degrees of accuracy

negative numbers

multiplication tables

mixed operations

long division

long multiplication

columnar addition



True or false?

■ $132 \div 11 = 4^2$ (F) $4^2 = 4 \times 4 = 16$

■ $25 \times 4 = 50 + 50$ (T)

■ $1000 \div 10 = 10 \times 100$ (F)



Turbo Maths

Mental
calculations

Whose method would you choose?

Divide 1,248 by

- 48
- 24
- 12

What did you do each time?
Explain your strategy.

$$\begin{aligned}1,248 \div 48 &= 26 \\1,248 \div 24 &= 52 \\1,248 \div 12 &= 104\end{aligned}$$

I used factor pairs to complete the first question e.g. I divided 1,248 by 12 then divided the answer by 4

Because 24 is half of 48, I doubled 26 to get 52

I repeated this with 12 to get 104



Turbo Maths

Number
Rounding

How many ways?

When rounded to the nearest 10, C and D make the same number.

The difference between C and D is 7.

Rounded to the nearest 100, C is 100 and D is 200.

What are the possible values of C and D?

Level 1: I can find a combination for C and D

Level 2: I can find different combinations for C and D

Level 3: I know how many combinations there are for C and D

C 50 149
D 150 249
C 146 153
D 150 151



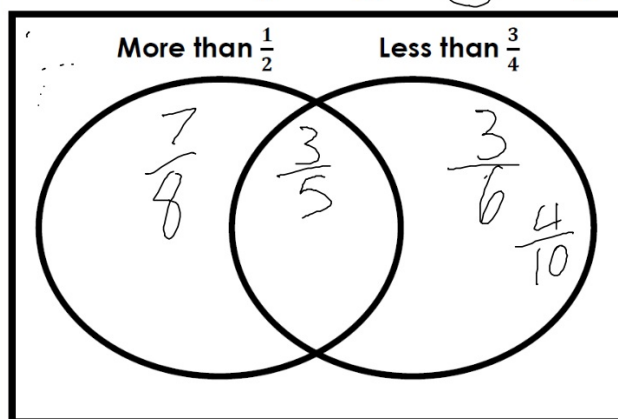
Turbo Maths

Fractions

Explore

Write these fractions in the correct section of the Venn diagram:

$\frac{3}{6}$ $\frac{4}{10}$ $\frac{3}{5}$ $\frac{7}{8}$



Add some of your own fractions

$$\frac{3}{6} = \frac{1}{2}$$

$$\frac{4}{10} = \frac{2}{5}$$

$$\frac{2.5}{5} \times 2$$

$$\frac{3}{5} \rightarrow \frac{6}{10}$$

$\times 2$



Turbo Maths

Statistics

Explain

There are four 9-year-old children and a teacher in a classroom.

The average age for the five people in the classroom is 12.

How old is the teacher?

$$9 \times 4 = 36$$

$$9 \div 5 = 12$$

$$(60) (24)$$

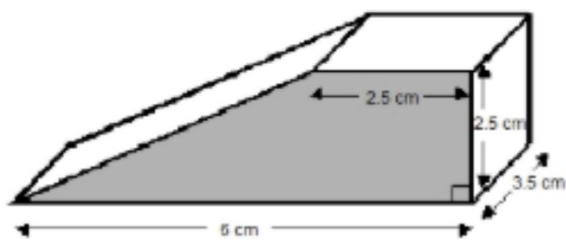


Turbo Maths

What could the question be?

Wedges

This door wedge is the shape of a prism.





NOT TO
SCALE


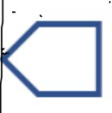




Explain

Tick the correct box for each example. Explain.

Start position	End position
	
<input checked="" type="checkbox"/> The shape has been reflected <input type="checkbox"/> The shape has been translated <input type="checkbox"/> The shape may have been translated or reflected	

Start position	End position
	
<input type="checkbox"/> The shape has been reflected <input type="checkbox"/> The shape has been translated <input type="checkbox"/> The shape may have been translated or reflected	

reflection 

translation

moving the whole shape



Turbo Maths

Number

Factors and Multiples Game

See website

[https://nrich.maths.org/factors
andmultiples](https://nrich.maths.org/factorsandmultiples)



[Turbo Maths](#)

Pattern

Which is the odd one out?

See website

http://www.transum.org/Software/sw/Starter_of_the_day/Starter_April30.asp



Turbo Maths

Number fluency

Countdown...

Can you use any of these numbers to reach the target?

How close can you get to the target?

You can use all four operations!

<http://happysoft.org.uk/countdown/numgame.php>